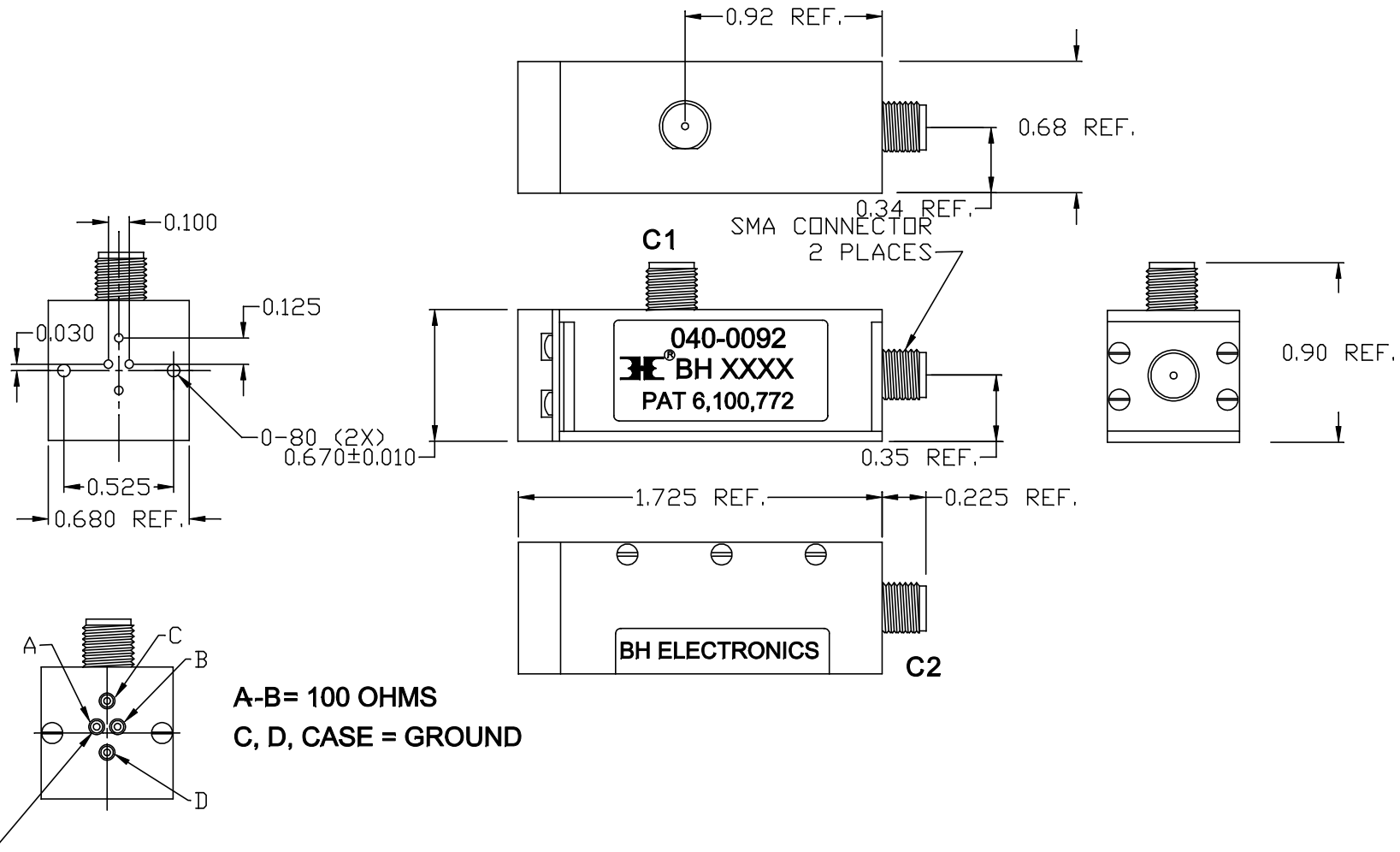


MECHANICAL



PROTECTED UNDER PATENT 6,100,772

ISSUE	DATE	REVISION	BY
G	4-13-11	REMOVE NOTES	BG
F	4-4-11	ADD NOTES	NGD
E	6-26-07	ADD REAR DIMENSIONS	NGD
D	3-16-06	ADD HOLE DIMENSIONS	NGD
C	4-23-02	REVISE ELECTRICALS	NGD
B	11-30-01	REVISE SCHEMATIC	NGD
A	9-7-01	CUSTOMER PRINT (Q10170)	NGD

DESIGN PER:	
<b>BH CATALOG</b>	
<input checked="" type="checkbox"/>	CUSTOM
<input type="checkbox"/>	NON-PROPRIETARY
DRAWN:	K. LOFTUS
ENGR:	N. DOOSE
UNLESS OTHERWISE SPECIFIED: DIMENSIONS IN INCHES, TOLERANCES NON-CUMULATIVE .XX±.01 .XXX±.005	
PAGE 1 OF 3	

**BH** <sup>®</sup> BHELECTRONICS, INC.  
BURNSVILLE & MARSHALL, MN  
© 1998 BH Electronics

TITLE:	<b>TEST BALUN</b>
PART NO.	<b>040-0092</b>

**ELECTRICAL SPECIFICATIONS**

**INSERTION LOSS: 1.8dB MAX. 1 MHz - 15 MHz**

**1.2dB MAX. 15 MHz - 250 MHz**

**1.4dB MAX. 250 MHz - 350 MHz**

**1.8dB MAX. 350 MHz - 650 MHz**

**RETURN LOSS (BIDIRECTIONAL): 12dB MIN. 1 MHz - 15 MHz**

**20dB MIN. 15 MHz - 550 MHz**

**17.5dB MIN. 550 MHz - 650 MHz**

**RETURN LOSS (COMMON MODE): 15dB MIN. 1 MHz - 15 MHz**

**20dB MIN. 15 MHz - 400 MHz**

**15dB MIN. 400 MHz - 650 MHz**

**LONGITUDINAL BALANCE: 60dB MIN. 1 MHz - 350 MHz**

**50dB MIN. 350 MHz - 650 MHz**

**COMMON MODE REJECTION: 50dB MIN, 1 MHz - 500 MHz**

**45dB MIN., 500 MHz - 650 MHz**

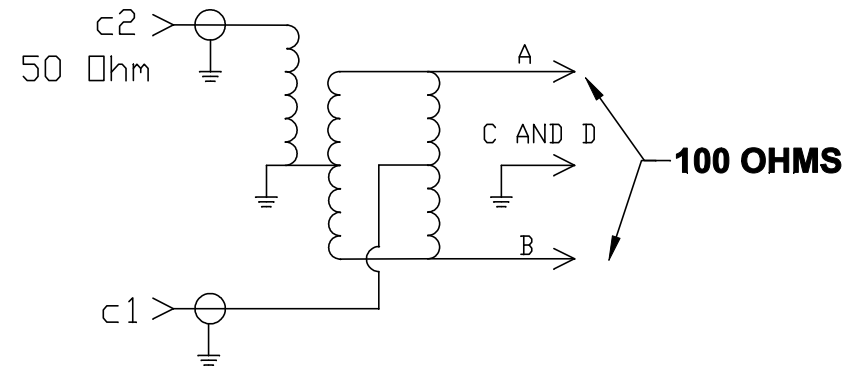
**OUTPUT SIGNAL BALANCE: 50dB MIN., 1 MHz - 500 MHz**


**45dB MIN., 500 MHz - 650 MHz**

**INPUT POWER, ALL PORTS: 0.1 WATT CONTINUOUS**

**0.4 WATTS MAXIMUM**

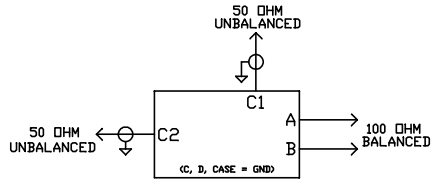
**SCHEMATIC**



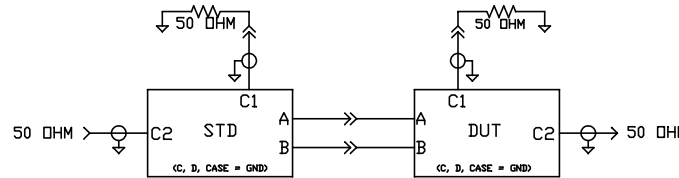
				DESIGN PER:		 <b>BHELECTRONICS, INC.</b> BURNSVILLE & MARSHALL, MN © 1998 BH Electronics	
G	4-13-11	REMOVE NOTES	BG	<b>BH CATALOG</b>			
F	4-4-11	ADD NOTES	NGD	<input checked="" type="checkbox"/> CUSTOM	<input type="checkbox"/> NON-PROPRIETARY		
E	6-26-07	ADD REAR DIMENSIONS	NGD	DRAWN: K. LOFTUS			
D	3-16-06	ADD HOLE DIMENSIONS	NGD	ENGR: N. DOOSE			
C	4-23-02	REVISE ELECTRICALS	NGD	UNLESS OTHERWISE SPECIFIED: DIMENSIONS IN INCHES, TOLERANCES NON-CUMULATIVE .XX±.01 .XXX±.005			
B	11-30-01	REVISE SCHEMATIC	NGD				
A	9-7-01	CUSTOMER PRINT (Q10170)	NGD				
ISSUE	DATE	REVISION	BY	PAGE 2 OF 3			TITLE: <b>TEST BALUN</b> PART NO. <b>040-0092</b>

# TEST CONFIGURATIONS

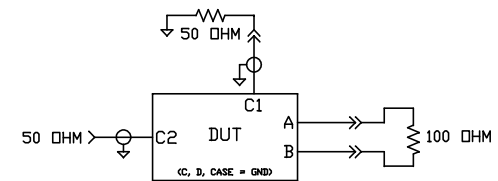
PORT DETAILS



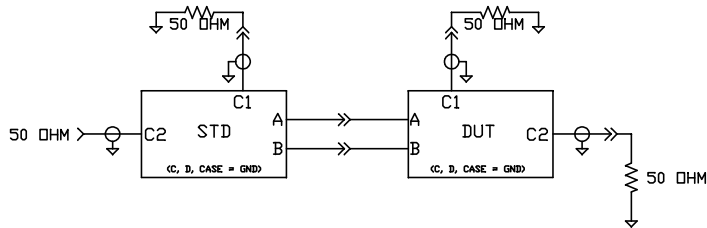
INSERTION LOSS  
(2 UNITS BACK TO BACK)



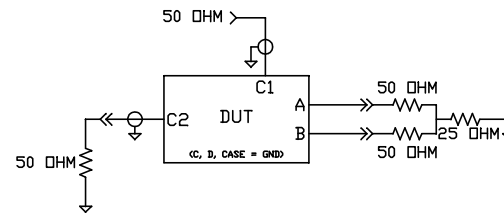
RETURN LOSS  
50:100 OHM



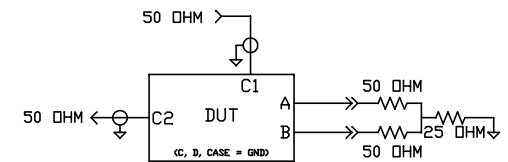
RETURN LOSS  
100:50 OHM



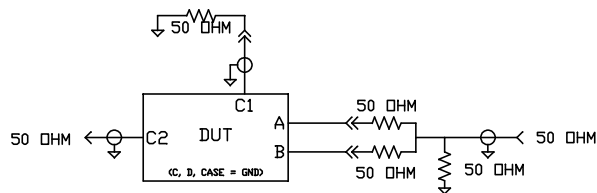
RETURN LOSS  
COMMON MODE



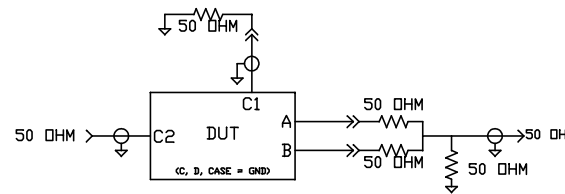
LONGITUDINAL  
BALANCE



COMMON MODE  
REJECTION




OUTPUT SIGNAL  
BALANCE



ISSUE	DATE	REVISION	BY
G	4-13-11	REMOVE NOTES	BG
F	4-4-11	ADD NOTES	NGD
E	6-26-07	ADD REAR DIMENSIONS	NGD
D	3-16-06	ADD HOLE DIMENSIONS	NGD
C	4-23-02	REVISE ELECTRICALS	NGD
B	11-30-01	REVISE SCHEMATIC	NGD
A	9-7-01	CUSTOMER PRINT (Q10170)	NGD

DESIGN PER:	
<b>BH CATALOG</b>	
<input checked="" type="checkbox"/>	CUSTOM
<input type="checkbox"/>	NON-PROPRIETARY
DRAWN:	K. LOFTUS
ENGR:	N. DOOSE
UNLESS OTHERWISE SPECIFIED: DIMENSIONS IN INCHES, TOLERANCES NON-CUMULATIVE .XX±.01 .XXX±.005	
PAGE 3 OF 3	

	BHELECTRONICS, INC. BURNSVILLE & MARSHALL, MN	
	© 1998 BH Electronics	
TITLE:	<b>TEST BALUN</b>	
PART NO.	<b>040-0092</b>	