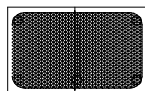
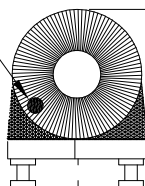


MECHANICAL



BROWN PIN 1 MARKING



.280 MAX. (C)

\parallel .004
FOUR SURFACES

0.040 (4X) (F)

0.175 (2X) (E)

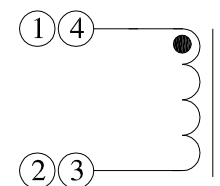
0.150 MAX. (A)

0.075 (2X) (D)

0.235 (B)

BOTTOM VIEW

SCHEMATIC



- MARKING REQUIREMENTS: MARK PRIMARY PACKAGING CONTAINER.
501-0911
BH YYWW
- CONFORMAL COAT WITH SC 281
- AMBIENT TEMPERATURE RANGE:
OPERATING: -46°C TO +125°C
NON-OPERATING: -51°C TO +125°C
- THERMAL SHOCK: IN ACCORDANCE WITH MIL-STD-202, METHOD 107 EXCEPT STEP 3
TEMPERATURE SHALL BE +125°C
NUMBER OF CYCLES: FIVE (5)
- UNITS SHALL BE CAPABLE OF MEETING SOLDERABILITY IN ACCORDANCE WITH MIL-STD-202, METHOD 208.
- MAGNET WIRE SHALL IN ACCORDANCE WITH JW1177/42 (155°C) NEMA MW80
- UNIT TO BE MARKED WITH BROWN DOT ABOVE PIN #1.
- UNITS SHALL BE CAPABLE OF MEETING RESISTANCE TO SOLVENTS IN ACCORDANCE WITH MIL/STD-202, METHOD 215
- LEAD WIRES SOLDERED WITH SN10 PB88 AG02 SOLDER


ELECTRICAL SPECIFICATIONS

OPEN CIRCUIT INDUCTANCE: 480-738nH 100 KHz 10mV

INDUCTANCE WITH DC BIAS: 360nH MIN. @ 100 KHz 100mV & 2.0 ADC BIAS

DC RESISTANCE: 0.015 OHMS MAX.

SRF: 600 MHz MIN.

				DESIGN PER:		 (R) BH ELECTRONICS, INC. BURNSVILLE & MARSHALL, MN (C) 1998 BH Electronics	
					BH CATALOG CUSTOM NON-PROPRIETARY X		
				DRAWN:	K. LOFTUS		
				ENGR:	B. HAYS		
H	10-7-11	REVISE WIRE SPEC	JDC	UNLESS OTHERWISE SPECIFIED: DIMENSIONS IN INCHES, TOLERANCES NON-CUMULATIVE .XX±.01 .XXX±.005		TITLE:	
G	4-21-10	ECR #8592 REVISE MECHANICALS	JDC				INDUCTOR
ISSUE	DATE	REVISION (Q11006-1)	BY			PART NO.	501-0911
				PAGE 1 OF 1			