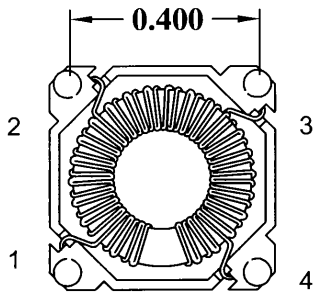
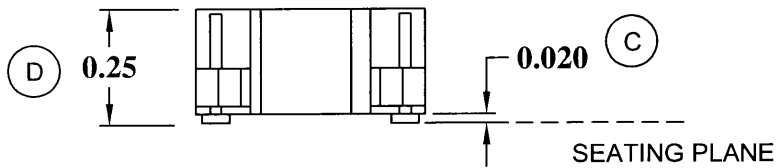
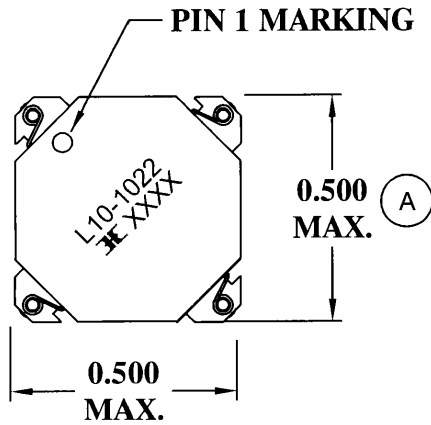
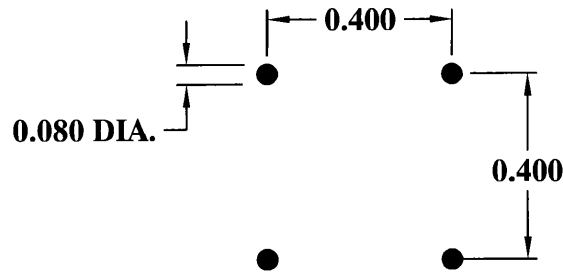


MECHANICAL

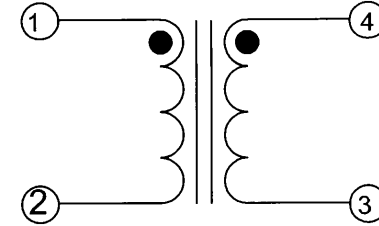


COPLANARITY 0.004"

RECOMMENDED PC BOARD LAYOUT



SCHEMATIC



ELECTRICAL SPECIFICATIONS

TURNS RATIO: 1:1

OPEN CIRCUIT INDUCTANCE: (1-2) 23.65 - 35.47 μ H @ 0 ADC 10 KHz 100mV


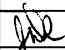
DC BIAS: (1-2) 23.65uH TYP. @ 2.54 ADC 10 KHz 100mV

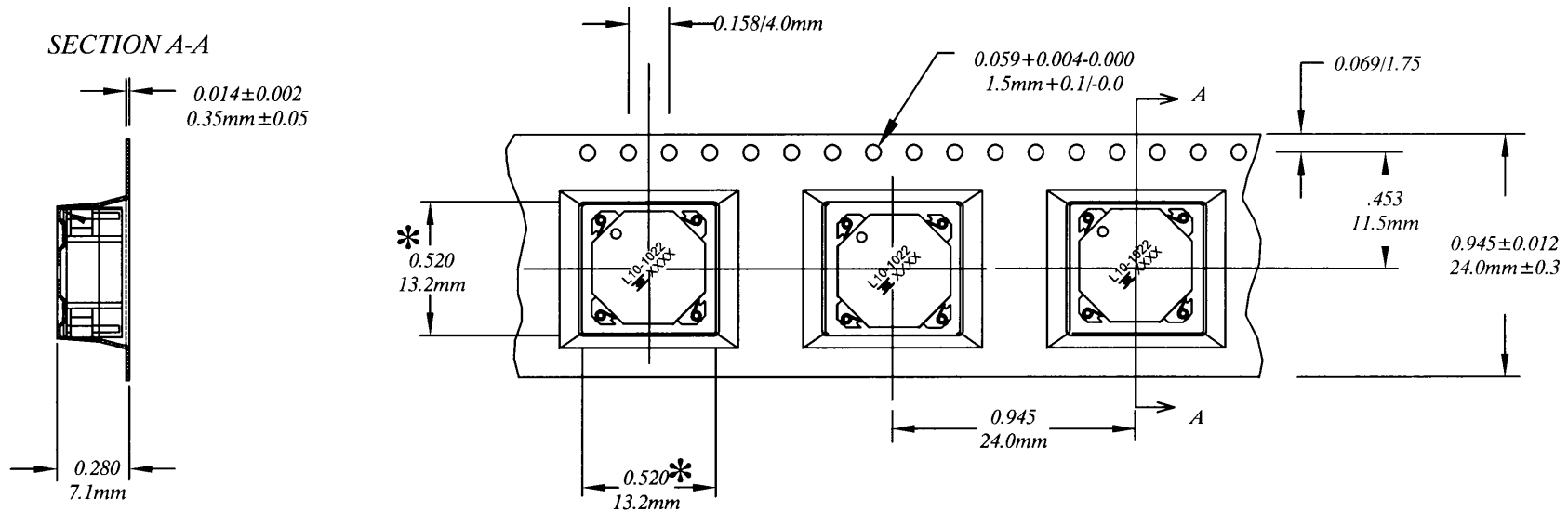
DC RESISTANCE: (1-2) 0.1184 OHMS NOM.

(3-4) 0.1184 OHMS NOM.


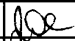
IR: 100 VDC 1K MEGOHMS MIN. (1, 2 - 3, 4)

RoHS Compliant

				DESIGNED PER:	 (R) BH Electronics, Inc. Burnsville & Marshall, MN (C) 1998 BH Electronics	
				BH CATALOG <input type="checkbox"/> CUSTOM <input checked="" type="checkbox"/> NON-PROPRIETARY		
				DRAWN Kathy Loftus		TITLE: QTR PAK TM (Switching Regulator)
				ENGR. J. DECRAMER		
B	10-4-06	REVISE MECHANICAL		UNLESS OTHERWISE SPECIFIED: DIMENSIONS IN INCHES, TOLERANCES NON-CUMULATIVE. .XX \pm .01 .XXX \pm .005		PART NO. L10-1022
A	8-1-05	CUSTOMER PRINT	JDC			
ISSUE	DATE	REVISION	BY			
				PAGE 1 OF 2		



CARRIER TAPE 811-0137

				DESIGNED PER:	 (R) BH Electronics, Inc. Burnsville & Marshall, MN © 1998 BH Electronics
				BH CATALOG <input type="checkbox"/> CUSTOM <input checked="" type="checkbox"/> NON-PROPRIETARY	
				DRAWN Kathy Loftus	TITLE: QTR PAK™ (Switching Regulator)
				ENGR. J. DECRAMER	
B	10-4-06	REVISE MECHANICALS		UNLESS OTHERWISE SPECIFIED: DIMENSIONS IN INCHES, TOLERANCES NON-CUMULATIVE. .XX±.01 .XXX±.005	PART NO. L10-1022
A	8-1-05	CUSTOMER PRINT	JJDC		
ISSUE	DATE	REVISION	BY		PAGE 2 OF 2