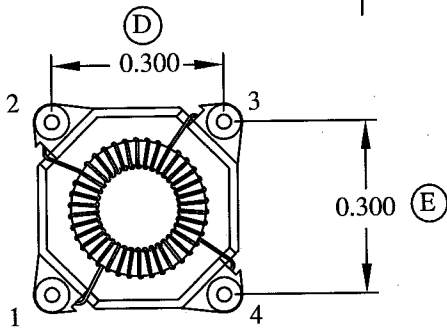
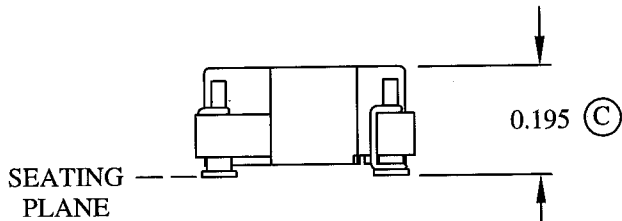
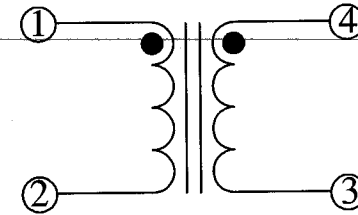
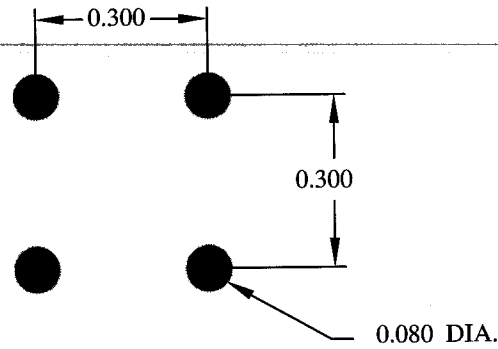
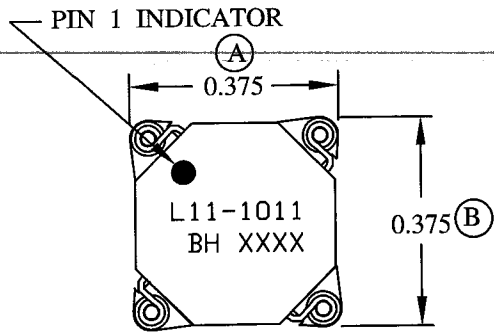


MECHANICAL

FOOTPRINT

SCHEMATIC



ELECTRICAL SPECIFICATIONS

OPEN CIRCUIT INDUCTANCE: 3.17-4.76 μ H

10 KHz 100mV

DC BIAS: 3.17 μ H TYP. @ 3.04 ADC (1-2)

10 KHz 100mV

DC RESISTANCE: (1-2 OR 3-4) 0.028 OHMS NOM.

IR: 1K MEGOHMS MIN. @ 100 VDC (1-4)

RoHS Compliant

DESIGN PER:

BH CATALOG

DRAWN: K. LOFTUS

ENGR: J. DECRAMER

UNLESS OTHERWISE SPECIFIED:
DIMENSIONS IN INCHES, TOLERANCES
NON-CUMULATIVE
.XX \pm .01 .XXX \pm .005

PAGE 1 OF 2



BH ELECTRONICS, INC.
BURNSVILLE & MARSHALL, MN

© 1998 BH Electronics

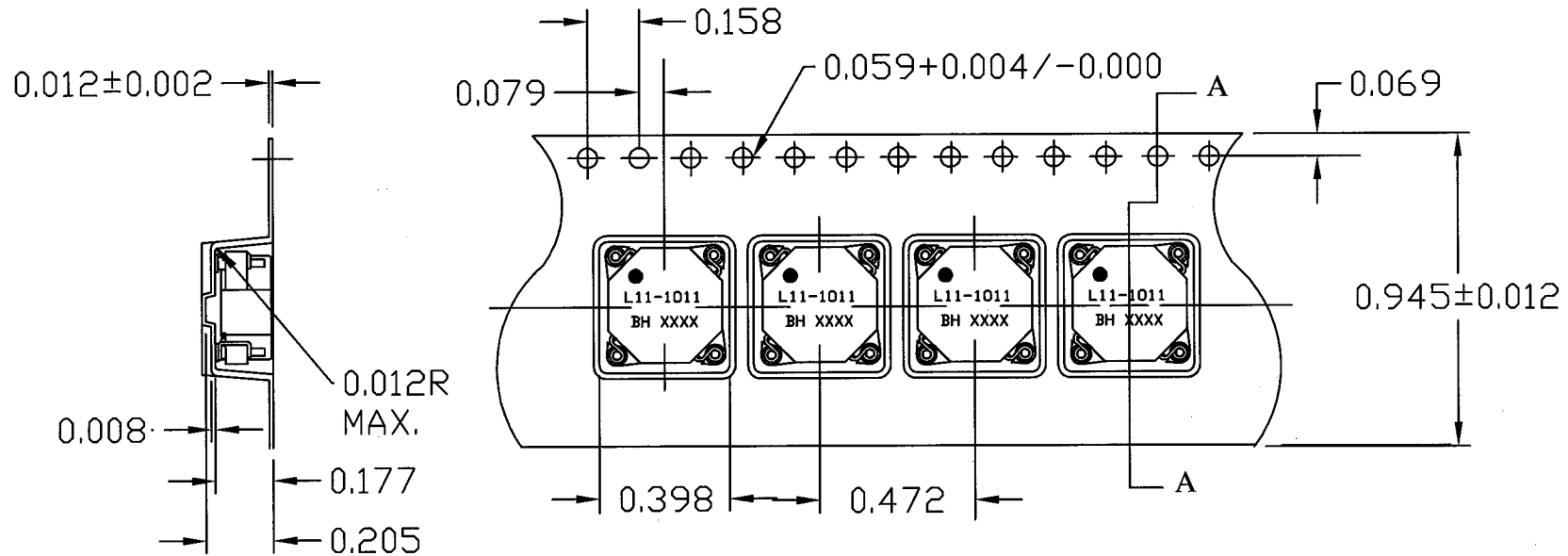
TITLE:

INDUCTOR


PART NO.

L11-1011

ISSUE	DATE	REVISION	BY
A	9-8-05	CUSTOMER PRINT	<i>[Signature]</i>



CARRIER TAPE 811-0187

				DESIGN PER:	 BH ELECTRONICS, INC. BURNSVILLE & MARSHALL, MN © 1998 BH Electronics
				BH CATALOG	
				DRAWN: K. LOFTUS	TITLE: INDUCTOR
				ENGR: J. DECRAMER	
				UNLESS OTHERWISE SPECIFIED: DIMENSIONS IN INCHES, TOLERANCES NON-CUMULATIVE .XX±.01 XXX±.005	PART NO. L11-1011
A	9-8-05	CUSTOMER PRINT		PAGE 2 OF 2	
ISSUE	DATE	REVISION	BY		