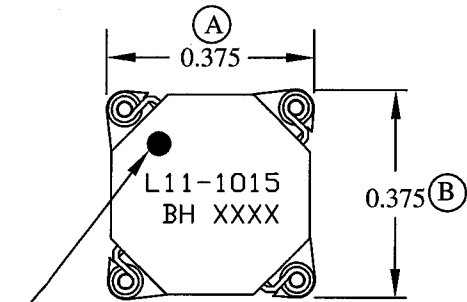
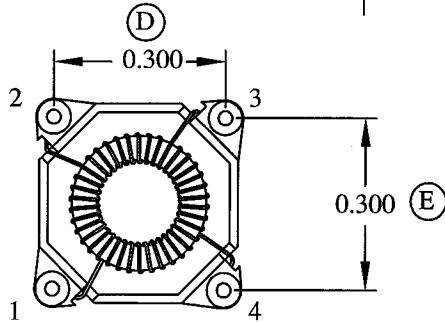
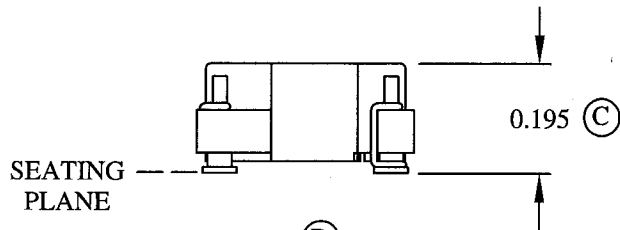


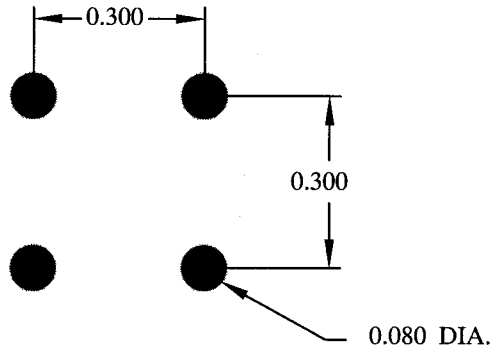
MECHANICAL



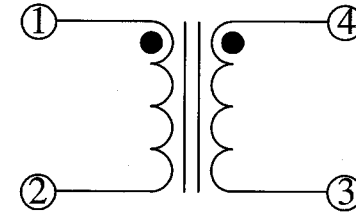
PIN 1 INDICATOR



FOOTPRINT



SCHEMATIC



ELECTRICAL SPECIFICATIONS


OPEN CIRCUIT INDUCTANCE: 12.70-19.04 μ H @ 0 ADC (1-2)
10 KHz 100mV

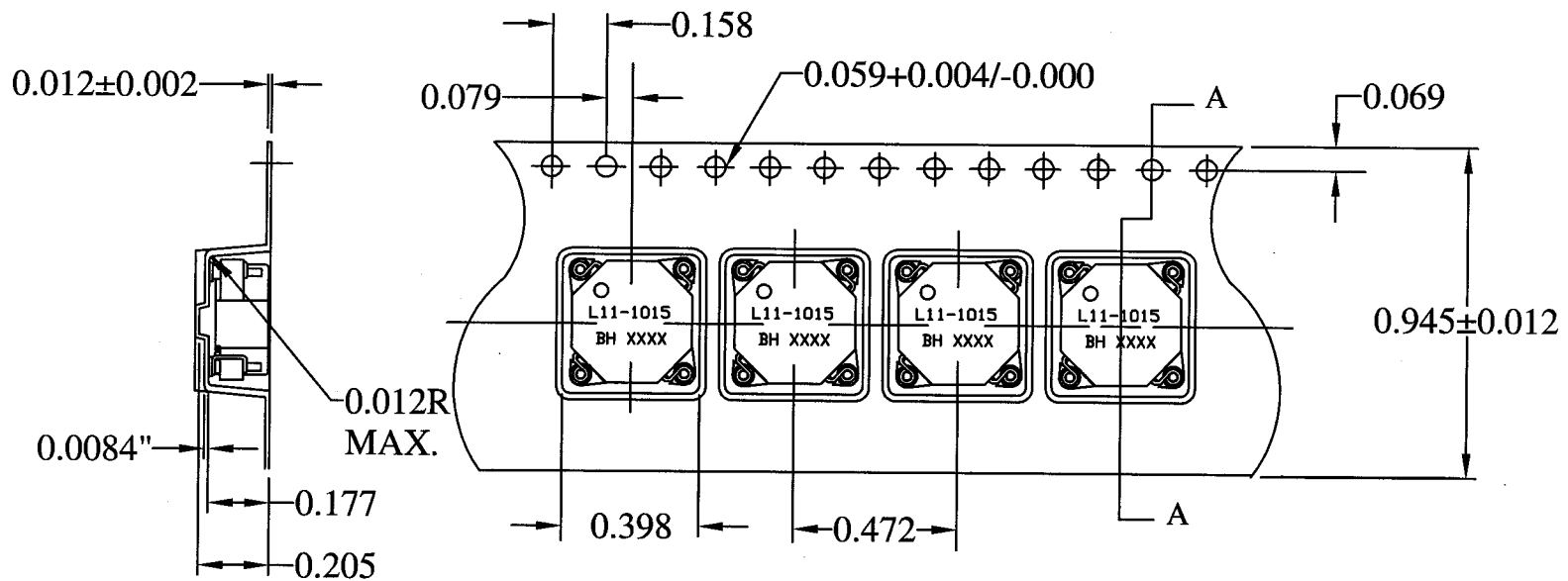
DC BIAS: 12.70 μ H TYP. @ 1.52 ADC (1-2) 10 KHz 100mV

DC RESISTANCE: (1-2 OR 3-4) 0.1134 OHMS NOM.


IR: 1K MEGOHMS MIN. @ 100 VDC (1-4)

RoHS Compliant

				DESIGN PER:	 BH ® BH ELECTRONICS, INC. BURNSVILLE & MARSHALL, MN © 1998 BH Electronics
				BH CATALOG	
				<input checked="" type="checkbox"/> CUSTOM <input type="checkbox"/> NON-PROPRIETARY	
				DRAWN: K. LOFTUS	
				ENGR: J. DECRAMER	
				UNLESS OTHERWISE SPECIFIED: DIMENSIONS IN INCHES, TOLERANCES NON-CUMULATIVE .XX±.01 .XXX±.005	TITLE: INDUCTOR
A	8-1-05	CUSTOMER PRINT	<i>[Signature]</i>		PART NO. L11-1015
ISSUE	DATE	REVISION	BY	PAGE 1 OF 2	



CARRIER TAPE 811-0187

				DESIGN PER:	 BH ELECTRONICS, INC. BURNSVILLE & MARSHALL, MN © 1998 BH Electronics
				BH CATALOG	
			<input checked="" type="checkbox"/> CUSTOM	<input type="checkbox"/> NON-PROPRIETARY	
			DRAWN:	K. LOFTUS	
			ENGR:	J. DECRAMER	TITLE:
			UNLESS OTHERWISE SPECIFIED: DIMENSIONS IN INCHES, TOLERANCES NON-CUMULATIVE .XX±.01 .XXX±.005		INDUCTOR
A	8-1-05	CUSTOMER PRINT			PART NO.
ISSUE	DATE	REVISION	BY	PAGE 2 OF 2	L11-1015