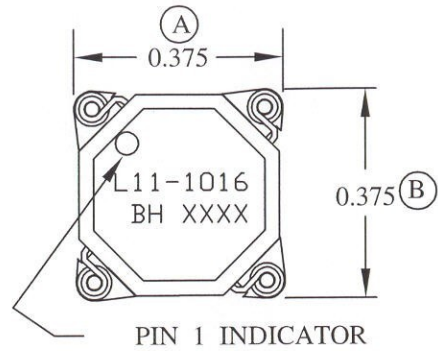
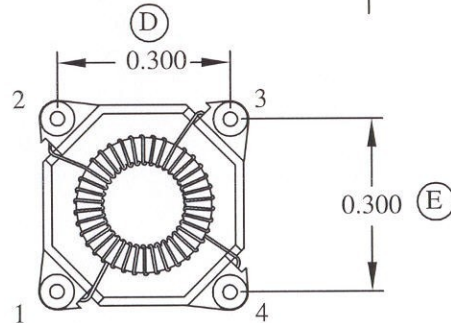
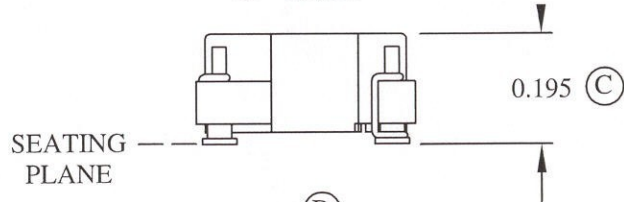


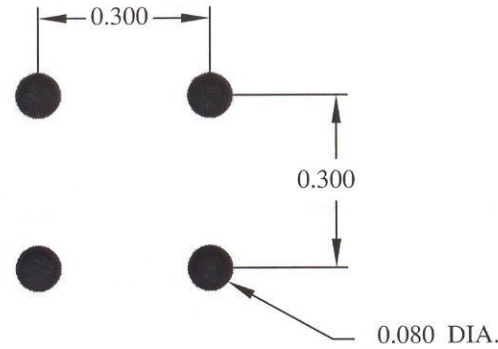
MECHANICAL



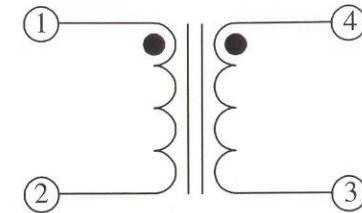
NOTE: LABEL MUST NOT EXTEND OVER EDGES OF CASE.



FOOTPRINT





SCHEMATIC

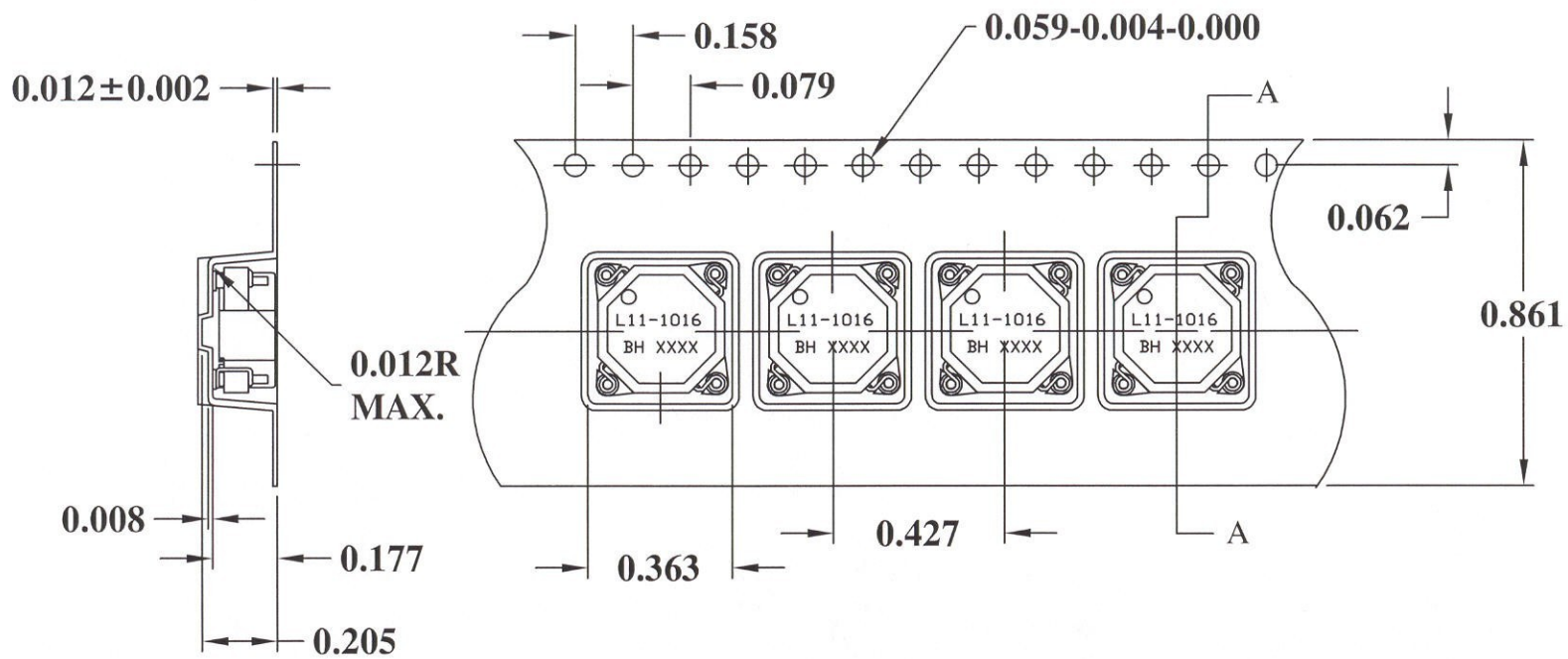


ELECTRICAL SPECIFICATIONS

OPEN CIRCUIT INDUCTANCE: 16.07-24.11 μ H (1-2) 10 KHz 100mV
 16.07 μ H NOM. @ 1.35 ADC (1-2)
 10 KHz 100mV
 DC RESISTANCE: 0.128 OHMS NOM. (1-2 OR 3-4)
 IR: 1K MEGOHMS MIN. @ 100 VDC (1-4)


RoHS Compliant

				DESIGN PER:		 BH ELECTRONICS, INC. BURNSVILLE & MARSHALL, MN © 1998 BH Electronics	
				BH CATALOG			
				CUSTOM	NON-PROPRIETARY		X
				DRAWN:	K. LOFTUS		
				ENGR:	J. DECRAMER	TITLE:	
B	9-13-05	ADD RoHS COMPLIANT		UNLESS OTHERWISE SPECIFIED: DIMENSIONS IN INCHES, TOLERANCES NON-CUMULATIVE .XX±.01 .XXX±.005		INDUCTOR	
A	9-13-05	CUSTOMER PRINT	JDC			PART NO.	L11-1016
ISSUE	DATE	REVISION	BY			PAGE 1 OF 2	



CARRIER TAPE 811-0187

RoHS Compliant

				DESIGN PER:	 BH ELECTRONICS, INC. BURNSVILLE & MARSHALL, MN © 1998 BH Electronics
				CATALOG	
				CUSTOM NON-PROPRIETARY <input checked="" type="checkbox"/>	
				DRAWN: K. LOFTUS	
				ENGR: J. DECRAMER	
B	9-13-05	ADD RoHS COMPLIANT		UNLESS OTHERWISE SPECIFIED: DIMENSIONS IN INCHES, TOLERANCES NON-CUMULATIVE .XX±.01 .XXX±.005	TITLE: INDUCTOR
A	9-13-05	CUSTOMER PRINT	JDC		PART NO. L11-1016
ISSUE	DATE	REVISION	BY		PAGE 2 OF 2