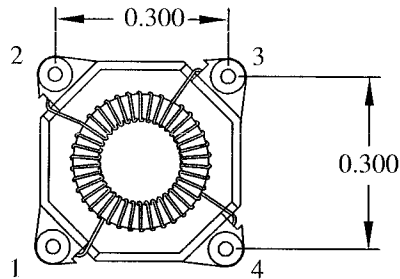
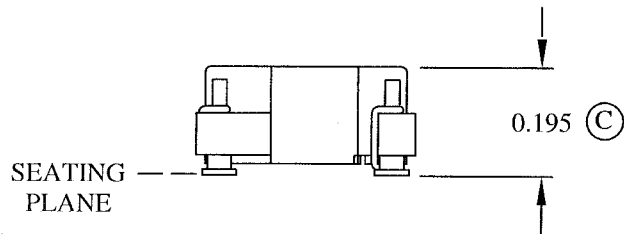
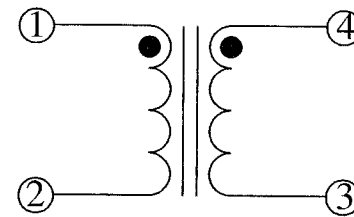
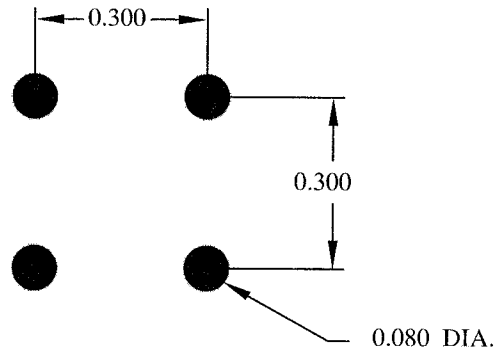
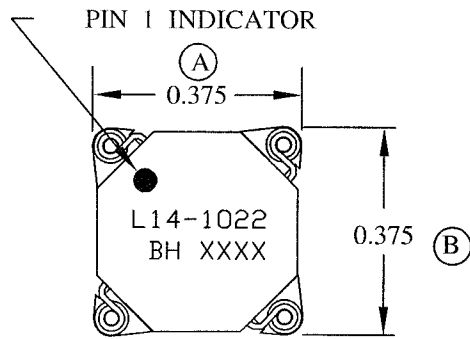


MECHANICAL

FOOTPRINT

SCHEMATIC



ELECTRICAL SPECIFICATIONS



URNS RATIO: 1:1

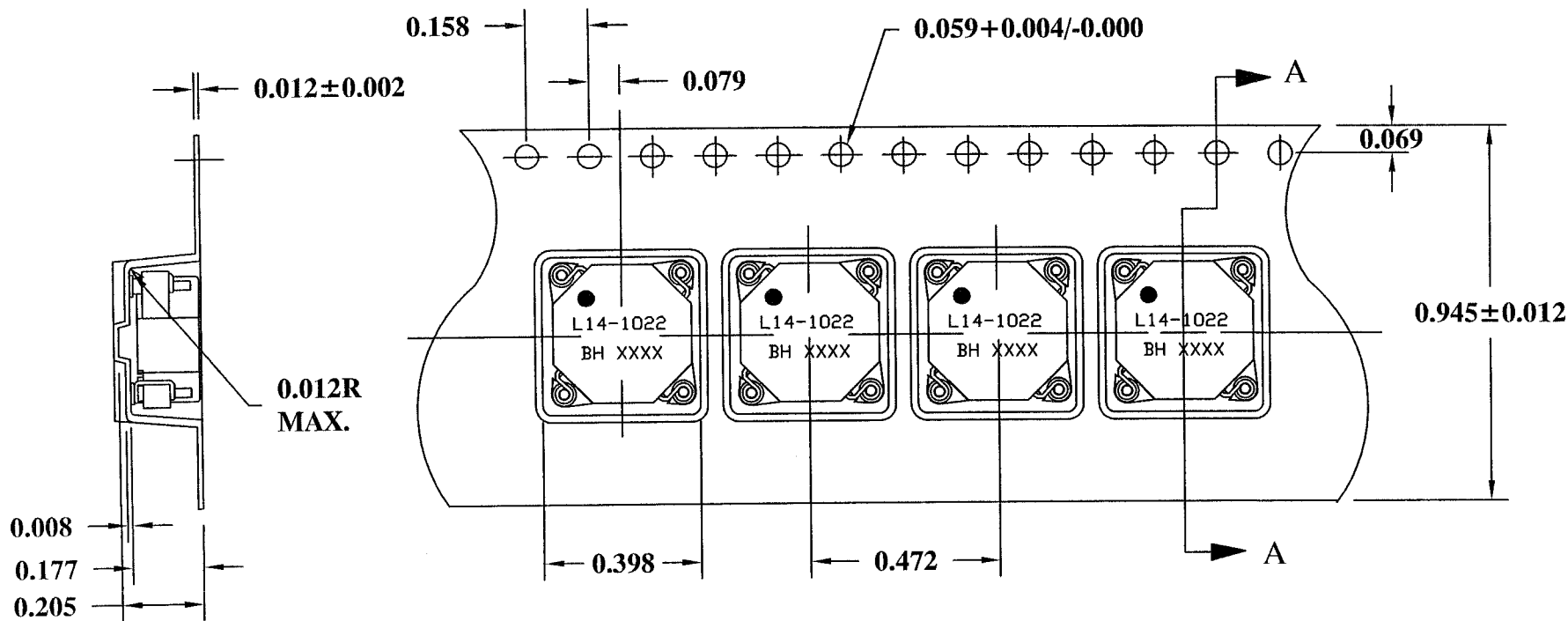
OPEN CIRCUIT INDUCTANCE: 5.51 μ H \pm 10% @ 0 ADC (1-2) (3-4)
10 KHz 100mV

DC BIAS: 3.3 μ H TYP. @ 4.23 ADC (1, 4 - 2, 3)
10 KHz 100mV


DC RESISTANCE: (1-2)(3-4) 0.1707 OHMS NOM.

IR: 1K MEGOHMS MIN. @ 100 VDC (1-4)

				DESIGN PER:	 BH ELECTRONICS, INC. BURNSVILLE & MARSHALL, MN © 1998 BH Electronics
				BH CATALOG <input type="checkbox"/> CUSTOM <input checked="" type="checkbox"/> NON-PROPRIETARY	
				DRAWN: K. LOFTUS ENGR: J. DECRAMER	
				TITLE: INDUCTOR	
A	5-18-06	CUSTOMER PRINT		UNLESS OTHERWISE SPECIFIED: DIMENSIONS IN INCHES, TOLERANCES NON-CUMULATIVE .XX \pm .01 .XXX \pm .005	PART NO.
ISSUE	DATE	REVISION	BY	PAGE 1 OF 2	L14-1022



CARRIER TAPE 811-0187

				DESIGN PER:	CATALOG	 BH ELECTRONICS, INC. BURNSVILLE & MARSHALL, MN © 1998 BH Electronics
				CUSTOM	NON-PROPRIETARY	
				DRAWN:	K. LOFTUS	TITLE: INDUCTOR
				ENGR:	J. DECRAMER	
				UNLESS OTHERWISE SPECIFIED: DIMENSIONS IN INCHES, TOLERANCES NON-CUMULATIVE .XX±.01 .XXX±.005		PART NO. L14-1022
A	5-18-06	CUSTOMER PRINT		PAGE 2 OF 2		
ISSUE	DATE	REVISION	BY			