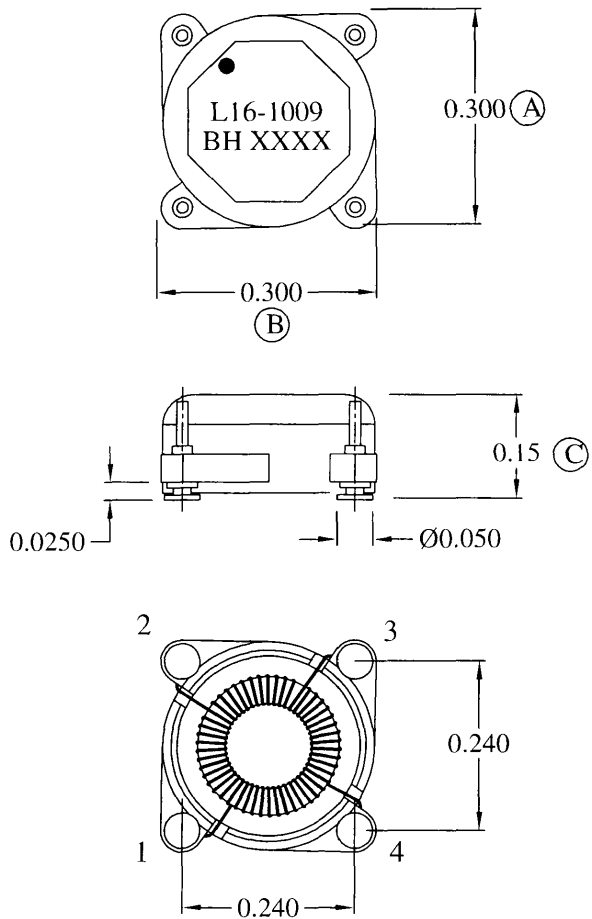
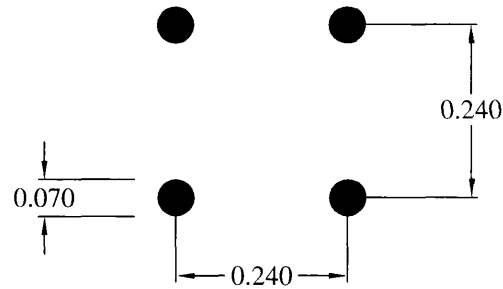


MECHANICAL

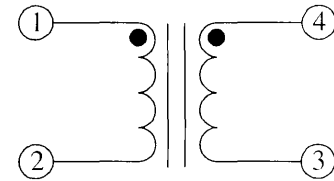


COPLANARITY 0.004 MAX.

SUGGESTED PAD LAYOUT



SCHEMATIC



ELECTRICAL SPECIFICATIONS

URNS RATIO: 1:1

OPEN CIRCUIT INDUCTANCE: 4.19 μ H \pm 20% @ 0 ADC (1, 4 - 2, 3)
10 KHz 100mV



DC BIAS: 3.35 μ H TYP. @ 3.78 ADC (1, 4 - 2, 3)
10 KHz 100mV

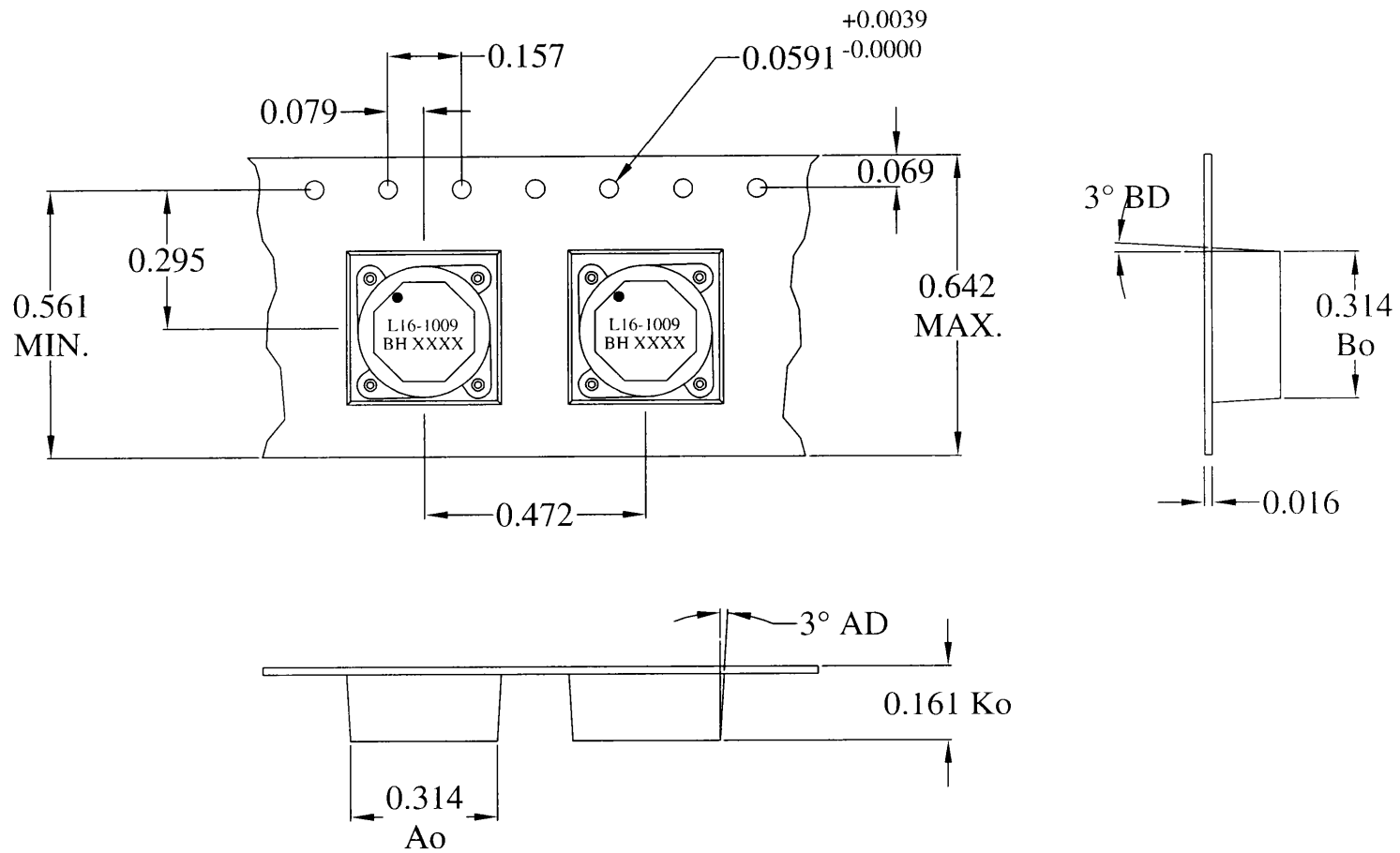
DC RESISTANCE: 0.041 OHMS MAX. (1, 4 - 2, 3)


IR: 1K MEGOHMS MIN. @ 100 VDC (1-4)

PRIMARY LEAKAGE INDUCTANCE: 90nH NOM. (1-2 SH 3, 4)
120 KHz 50mV

RoHS COMPLIANT

				DESIGN PER:	BH CATALOG	 BH ELECTRONICS, INC. BURNSVILLE & MARSHALL, MN © 1998 BH Electronics
				<input type="checkbox"/> CUSTOM	<input checked="" type="checkbox"/> NON-PROPRIETARY	
				DRAWN:	K. LOFTUS	
				ENGR:	J. DECRAMER	
C	11-30-11	REVISE DIMENSIONS		UNLESS OTHERWISE SPECIFIED: DIMENSIONS IN INCHES, TOLERANCES NON-CUMULATIVE .XX \pm .01 .XXX \pm .005		TITLE:
B	10-17-08	ADD PAGE 2	JDC			INDUCTOR
A	12-10-10	CUSTOMER PRINT	JDC			PART NO.
ISSUE	DATE	REVISION	BY	PAGE 1 OF 2		L16-1009



ISSUE	DATE	REVISION	BY	DESIGN PER:	TITLE:
				BH CATALOG	 BH ELECTRONICS, INC. BURNSVILLE & MARSHALL, MN © 1998 BH Electronics
				<input type="checkbox"/> CUSTOM NON-PROPRIETARY <input checked="" type="checkbox"/>	
				DRAWN: K. LOFTUS	INDUCTOR
				ENGR: J. DECRAMER	
				UNLESS OTHERWISE SPECIFIED: DIMENSIONS IN INCHES, TOLERANCES NON-CUMULATIVE .XX±.01 .XXX±.005	
				PAGE 2 OF 2	PART NO. L16-1009
C	11-30-11	REVISE DIMENSIONS			
B	10-17-08	ADD PAGE 2	JDC		
A	10-19-07	CUSTOMER PRINT	JDC		