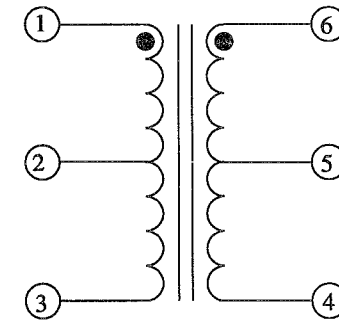
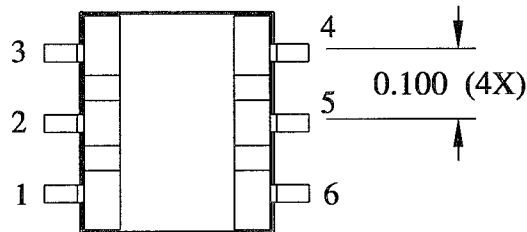
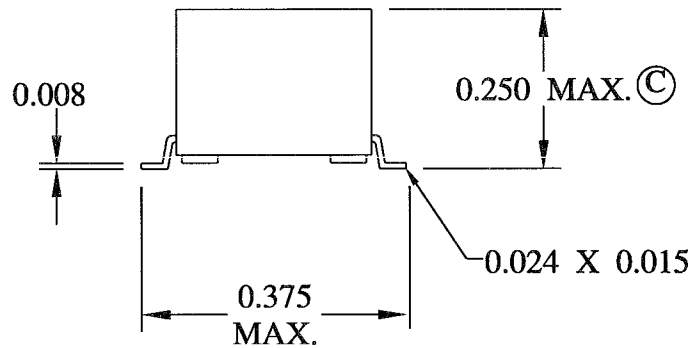
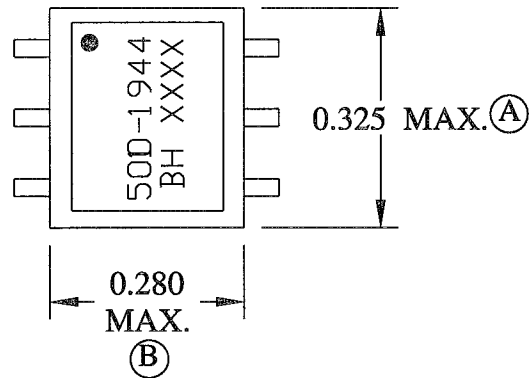


MECHANICAL

SCHEMATIC



ELECTRICAL SPECIFICATIONS

URNS RATIO: 1CT:1CT

OPEN CIRCUIT INDUCTANCE: 1.0mH MIN. 100 KHz 20mV

PRIMARY LEAKAGE INDUCTANCE: 25uH MAX.

INTERWINDING CAPACITANCE: 2.5pF MAX.

DC RESISTANCE: (PRI) 2.0 OHMS MAX. (SEC.) 2.0 OHMS MAX.

HIGH VOLTAGE TEST: 2000 VRMS/1 SEC.

ET CONSTANT: 30Vu SEC. MIN.


OPERATING FREQUENCY: 100 KHz TO 500 KHz

OPERATING TEMPERATURE: -30°C TO 80°C.

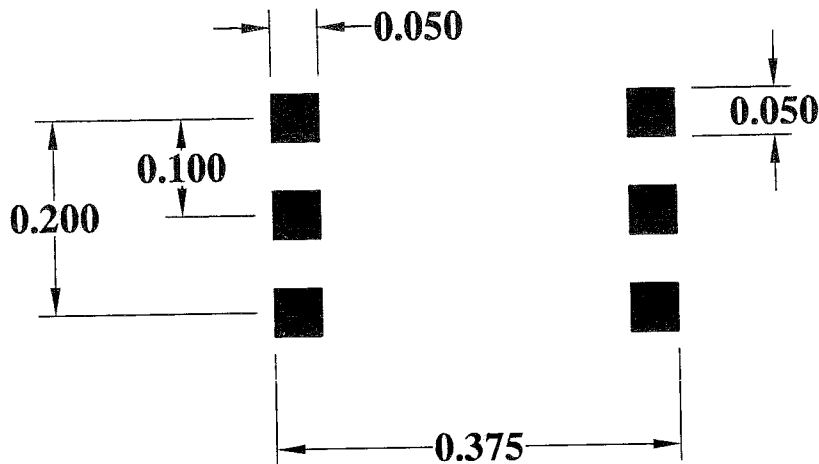
STORAGE TEMPERATURE: -45°C TO 105°C

ISSUE	DATE	REVISION (Q8539)	BY
N	5-31-01	ECR #5224 REMOVE DIMENSION	JDC
M	5-16-01	ECR #5223 HT. TO 0.250 MAX.	JDC
L	3-12-01	ADD PAGE 3	JDC
K	12-27-00	ECR #4946 UPDATE TO CAD	JDC
J	5-22-00	ADD DIMENSION TARGETS	JDC
H	3-22-99	ECR #4142 TO LABEL	

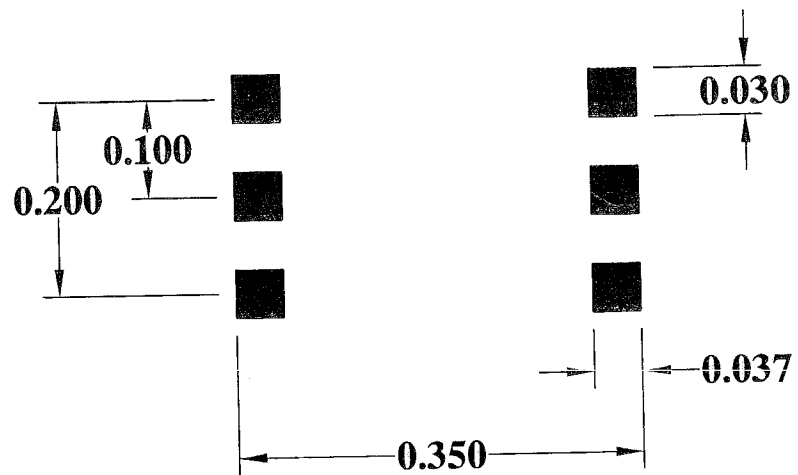
DESIGN PER:	CATALOG
DRAWN:	K. LOFTUS
ENGR:	J. DECRAMER
UNLESS OTHERWISE SPECIFIED: DIMENSIONS IN INCHES, TOLERANCES NON-CUMULATIVE .XX±.01 .XXX±.005	
PAGE 1 OF 3	


 BH ELECTRONICS, INC. BURNSVILLE & MARSHALL, MN © 1998 BH Electronics	TITLE:	TRANSFORMER
	PART NO.	500-1944

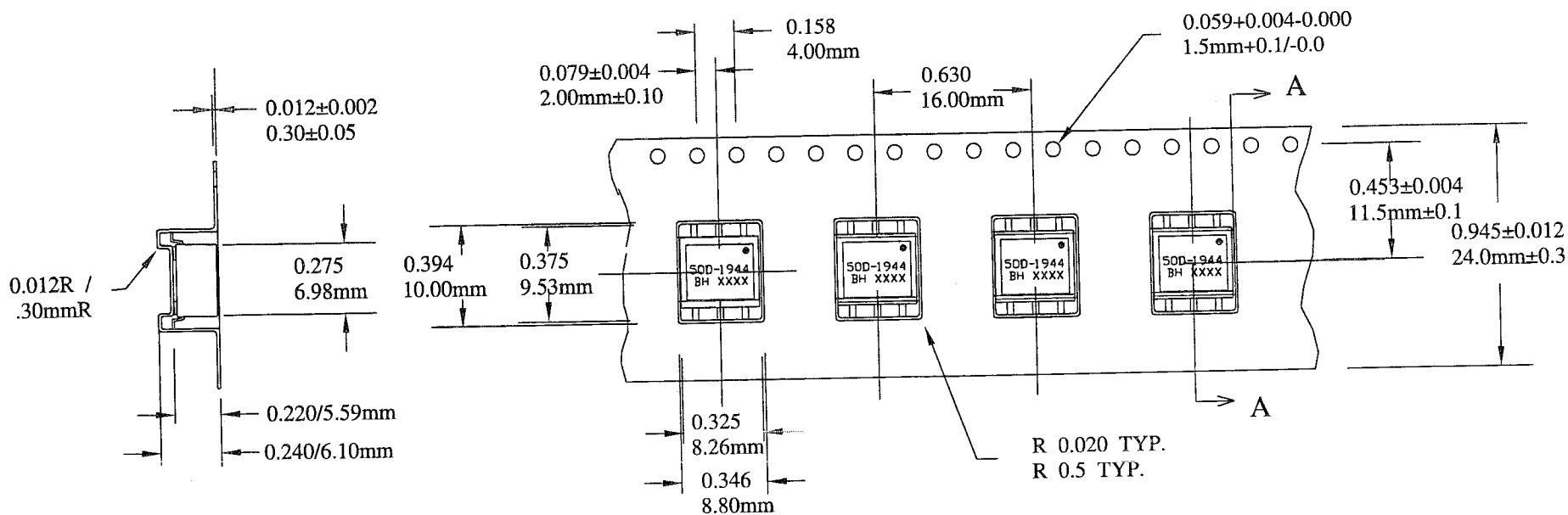
RECOMMENDED PAD ARRANGEMENT




TYPICAL CONTACT AREA



				DESIGN PER:	 <b>BH ELECTRONICS, INC.</b> BURNSVILLE & MARSHALL, MN © 1998 BH Electronics
				<b>CATALOG</b>	
N	5-31-01	ECR #5224 REMOVE DIMENSION		DRAWN: K. LOFTUS	TITLE: <b>TRANSFORMER</b>
M	5-16-01	ECR #5223 HT. TO .250 MAX.	JDC	ENGR: J. DECRAMER	
L	3-12-01	ADD PAGE 3	JDC	UNLESS OTHERWISE SPECIFIED: DIMENSIONS IN INCHES, TOLERANCES NON-CUMULATIVE .XX±.01 .XXX±.005	PART NO. <b>500-1944</b>
K	12-27-00	ECR #4946 UPDATE TO CAD	JDC		
J	5-22-00	ADD DIMENSION TARGETS	JDC		
H	3-22-99	ECR #4142 TO LABEL			
ISSUE	DATE	REVISION (Q8539)	BY	PAGE 2 OF 3	



### CARRIER TAPE 811-0204

				DESIGN PER:	 <b>BH ELECTRONICS, INC.</b> BURNSVILLE & MARSHALL, MN © 1998 BH Electronics
				<b>CATALOG</b>	
N	5-31-01	ECR #5224 REMOVE DIMENSION		DRAWN: K. LOFTUS	
M	5-16-01	ECR #5223 HT. TO 0.250 MAX.	JDC	ENGR: J. DECRAMER	
L	3-12-01	ADD PAGE 3	JDC	UNLESS OTHERWISE SPECIFIED: DIMENSIONS IN INCHES, TOLERANCES NON-CUMULATIVE .XX±.01 .XXX±.005	TITLE: <b>TRANSFORMER</b>
K	12-27-00	ECR #4946 UPDATE TO CAD	JDC		PART NO. <b>500-1944</b>
J	5-22-00	ADD DIMENSION TARGETS	JDC		
H	3-22-99	ECR #4142 TO LABEL			
ISSUE	DATE	REVISION (Q8539)	BY	PAGE 3 OF 3	