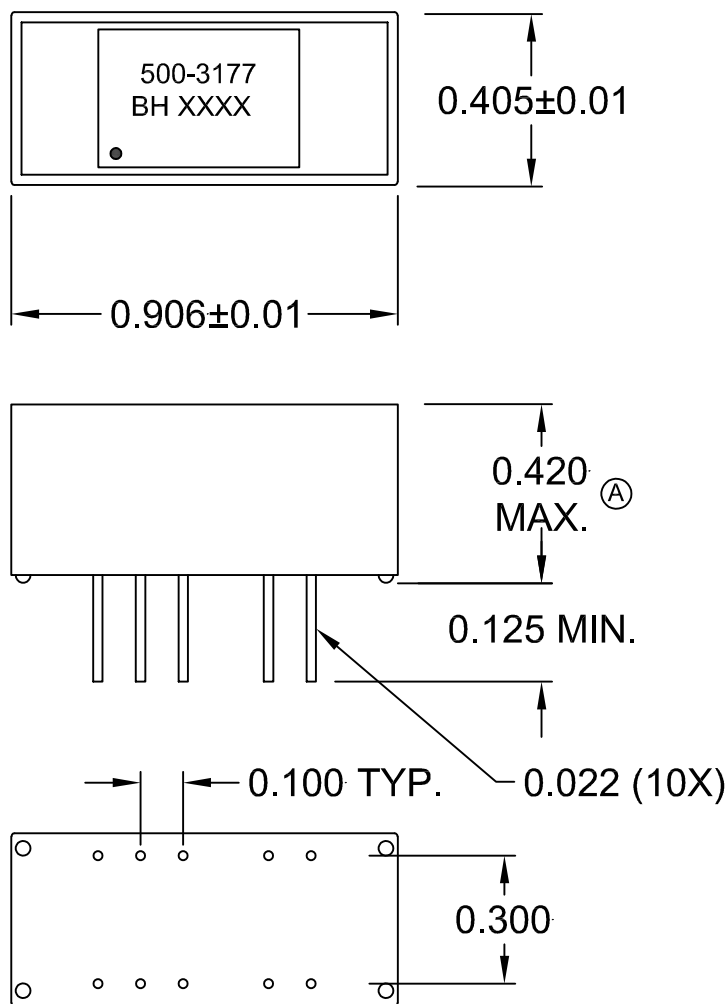
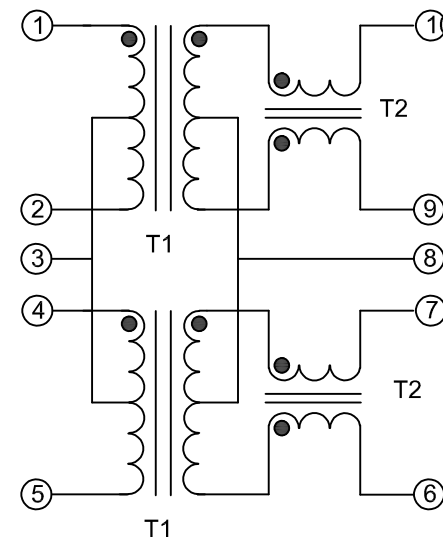


MECHANICAL



SCHEMATIC



ELECTRICAL SPECIFICATIONS

HIGH VOLTAGE TEST: 500 VAC (1-10)

INSERTION LOSS: <0.5dB 1 MHz - 15 MHz (1-2 TO 9-10) (4-5 TO 6-7)

RETURN LOSS: <14dB @ 10 MHz (1-2 TO 9-10) (4-5 TO 6-7)

DC RESISTANCE: 0.086 OHMS NOM. (1-2) (4-5)

0.104 OHMS NOM. (10-9) (6-10)

0.044 OHMS NOM. (3-1) (3-2) (3-4) (3-5)

0.052 OHMS NOM. (8-6) (8-7) (8-9) (8-10)

OPEN CIRCUIT INDUCTANCE: 205µH NOM. (1-2) (4-5)

100 KHz 100mV

DESIGN PER:

BH CATALOG

CUSTOM

NON-PROPRIETARY

DRAWN: K. LOFTUS

ENGR: J. DECRAMER

UNLESS OTHERWISE SPECIFIED:
DIMENSIONS IN INCHES, TOLERANCES
NON-CUMULATIVE
.XX±.01 .XXX±.005

PAGE 1 OF 1



BH ELECTRONICS, INC.
BURNSVILLE & MARSHALL, MN

© 1998 BH Electronics

TITLE:

TRANSFORMER

PART NO.

500-3177

ISSUE	DATE	REVISION	BY
D	7-26-19	CHANGE TO BH CATALOG	<i>ms</i>
C	7-18-11	Q12835 NOW 500-3177	JDC
B	7-14-11	REVISE TURNS	JDC
A	5-4-11	CUSTOMER PRINT	JDC