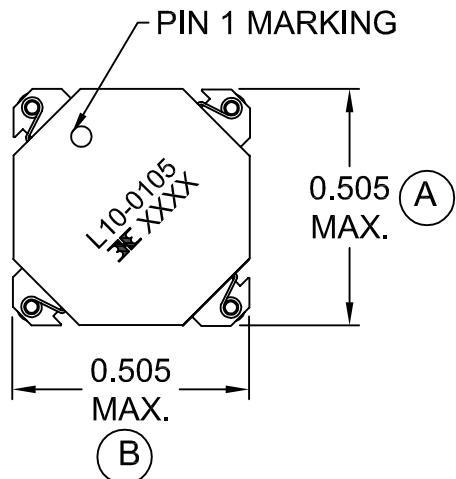
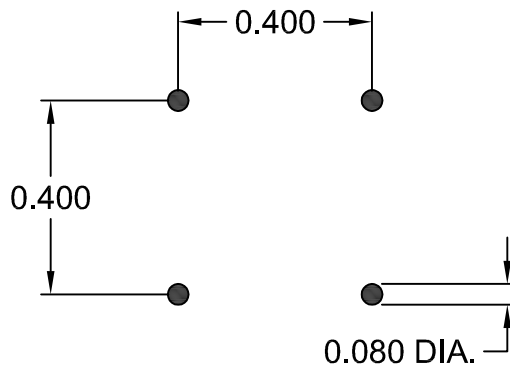


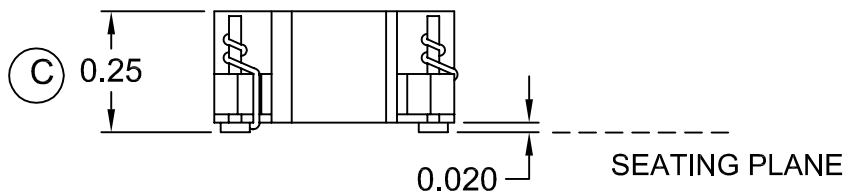
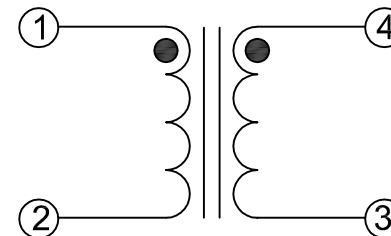
MECHANICAL



RECOMMENDED PC BOARD LAYOUT



SCHEMATIC



ELECTRICAL SPECIFICATIONS

URNS RATIO: 1:1  
 OPEN CIRCUIT INDUCTANCE: 435µH NOM. (1, 4 - 2, 3)  
 10 KHz 100mV

DC RESISTANCE: 0.009 OHMS NOM. (1, 4 - 2, 3)

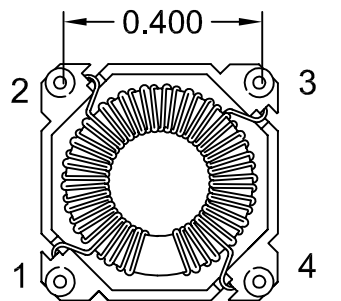
IR: 1K MEGOHMS MIN. @ 500 VDC (1-4)

IMPEDANCE: 1 MHz - 450 OHMS MIN.

10 MHz - 800 OHMS MIN.


100 MHz - 300 OHMS MIN.

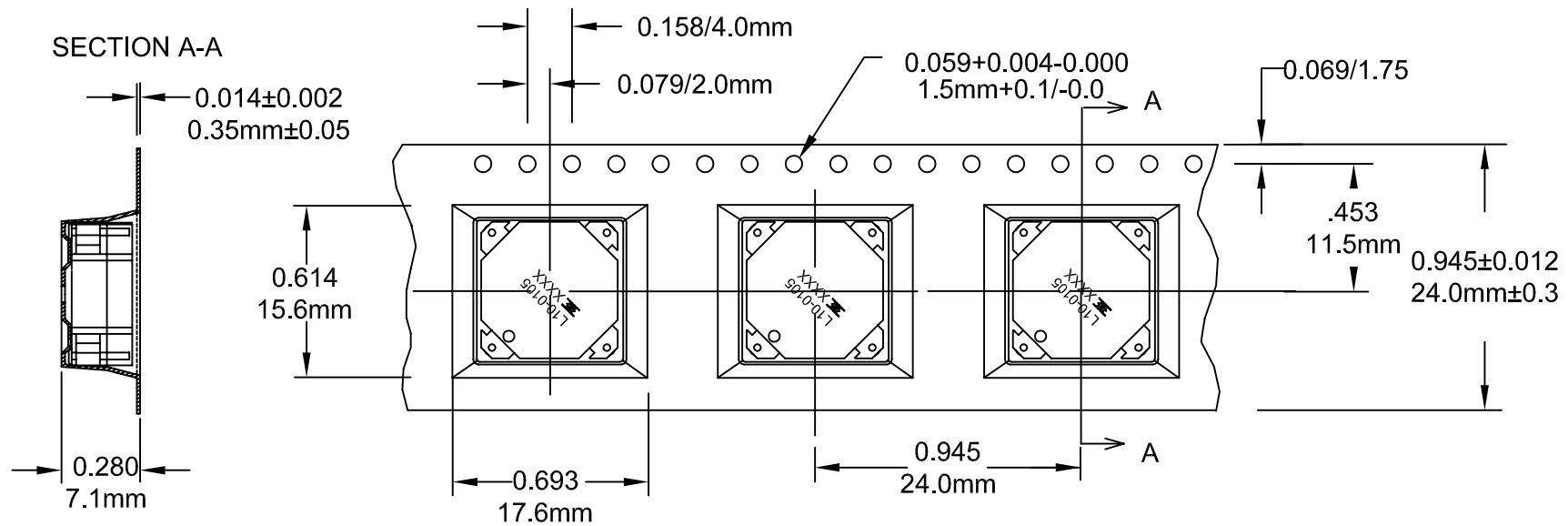
CURRENT RATING: 5.6A




COPLANARITY 0.004"

RoHS COMPLIANT

				DESIGNED PER:	 (R) BH Electronics, Inc. Burnsville & Marshall, MN (C) 1998 BH Electronics	
				BH CATALOG		
				CUSTOM	NON-PROPRIETARY	X
				DRAWN	KALANI SA	
				ENGR.	J. DECRAMER	
B	7-10-14	UPDATE MECH	JDC	UNLESS OTHERWISE SPECIFIED: DIMENSIONS IN INCHES, TOLERANCES NON-CUMULATIVE. .XX±.01 .XXX±.005		
A	1-17-08	CUSTOMER PRINT				
ISSUE	DATE	REVISION	BY	TITLE:		
				COMMON MODE CHOKE		
				PART NO.		
				L10-0105		
				PAGE 1 OF 2		



CARRIER TAPE 811-0137

				DESIGNED PER:	 (R) BH Electronics, Inc. Burnsville & Marshall, MN (C) 1998 BH Electronics
				BH CATALOG	
				CUSTOM <input type="checkbox"/> NON-PROPRIETARY <input checked="" type="checkbox"/>	
				DRAWN Kathy Loftus	
				ENGR. J. DECRAMER	TITLE:
B	7-10-14	UPDATE MECH	JDC	UNLESS OTHERWISE SPECIFIED: DIMENSIONS IN INCHES, TOLERANCES NON-CUMULATIVE. .XX±.01 .XXX±.005	COMMON MODE CHOKE
A	1-17-08	CUSTOMER PRINT			PART NO.
ISSUE	DATE	REVISION	BY		L10-0105
					PAGE 2 OF 2