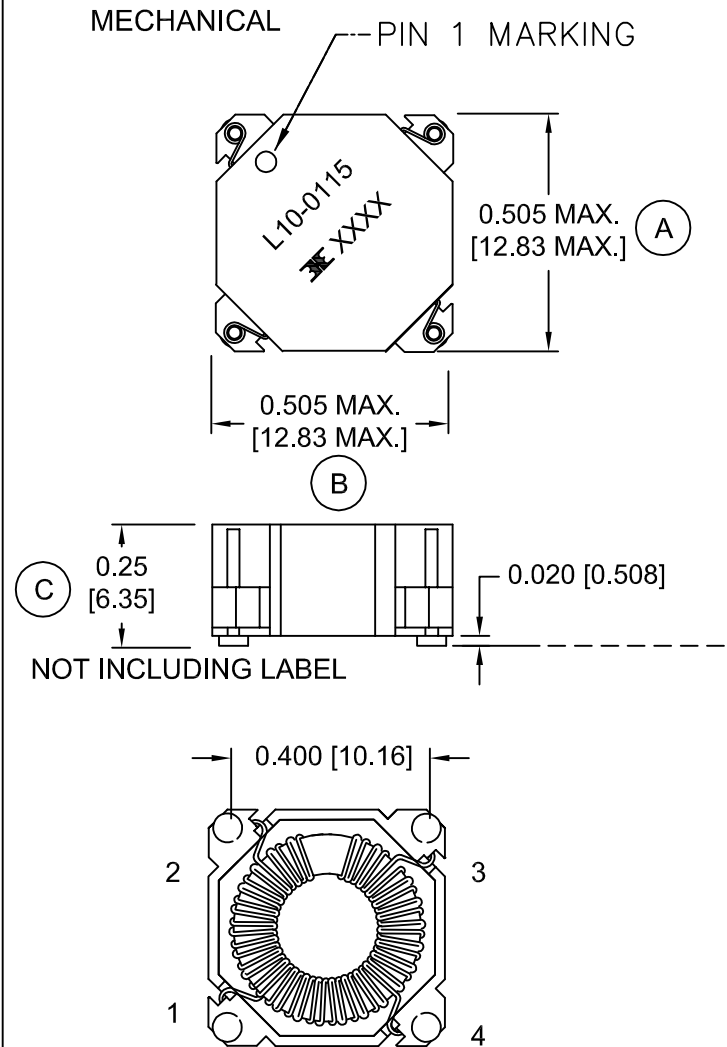
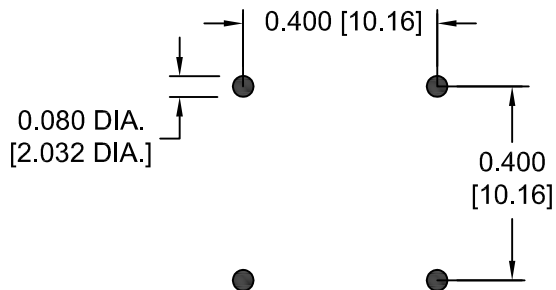


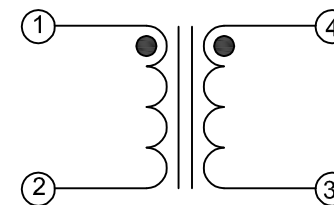
MECHANICAL



RECOMMENDED PC BOARD LAYOUT



SCHEMATIC



ELECTRICAL SPECIFICATIONS

TURNS RATIO: 4:1

OPEN CIRCUIT INDUTANCE: 500 μ H \pm 10% (1-2) 10 KHz 100mV

DC BIAS: 400 μ H NOM. @ 0.70 ADC (1-2) 10 KHz 100mV

PRIMARY LEAKAGE INDUCTANCE: 10 μ H NOM. (1, 2 SH 4, 3) 120 KHz 50mV

INTERWINDING CAPACITANCE: 70pF NOM. (1-4) 120 KHz 50mV


DC RESISTANCE: 2.0 OHMS MAX. (1-2)

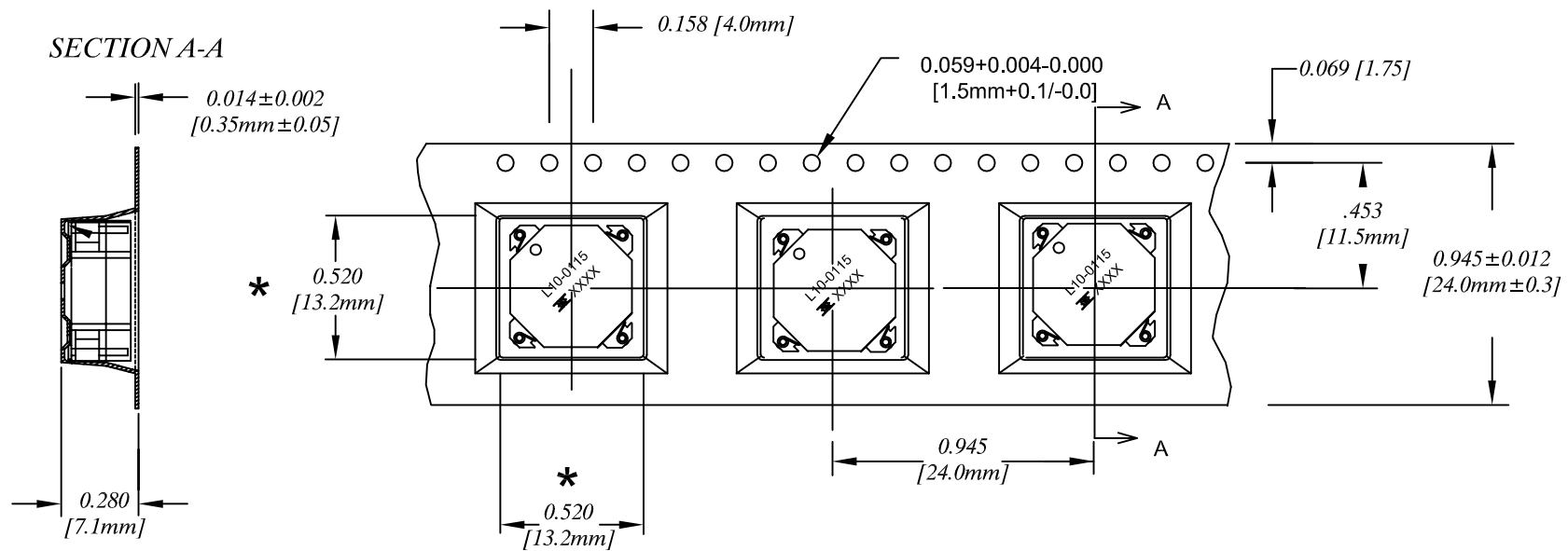
0.090 OHMS NOM. (4-3)

HIGH VOLTAGE TEST: 1500 VAC (1-4)


COPLANARITY 0.004" [0.1016]

RoHS COMPLIANT

				DESIGNED PER:		BH CATALOG		 (R) BH Electronics, Inc. Burnsville & Marshall, MN
				CUSTOM		NON-PROPRIETARY		
E	11-3-15	REMOVE EPOXIE FROM CASE	JDC	DRAWN Kathy Loftus		ENGR. J. DECRAMER		TITLE: QTR PAK™ (Switching Regulator)
D	12-18-14	UPDATE MECHANICAL SPECS		UNLESS OTHERWISE SPECIFIED: DIMENSIONS IN INCHES, TOLERANCES NON-CUMULATIVE.				PART NO. L10-0115
C	8-9-11	Q12786-6 NOW L10-0115		.XX \pm .01 .XXX \pm .005				
B	5-16-11	REDESIGN		PAGE 1 OF 2				
A	4-26-11	CUSTOMER PRINT	JDC					
ISSUE	DATE	REVISION	BY					



CARRIER TAPE 811-0137

				DESIGNED PER:	 (R) BH Electronics, Inc. Burnsville & Marshall, MN	
				BH CATALOG		
				CUSTOM	NON-PROPRIETARY	X
E	11-3-15	REMOVE EPOXIE FROM CASE		DRAWN Kathy Loftus		TITLE: QTR PAK™ (Switching Regulator)
D	12-18-14	UPDATE MECHANICAL SPECS		ENGR. J. DECRAMER		
C	8-9-11	Q12786-6 NOW L10-0115		UNLESS OTHERWISE SPECIFIED: DIMENSIONS IN INCHES, TOLERANCES NON-CUMULATIVE. .XX±.01 .XXX±.005		PART NO. L10-0115
B	5-16-11	REDESIGN				
A	4-26-11	CUSTOMER PRINT	JDC			
ISSUE	DATE	REVISION	BY	PAGE 2 OF 2		