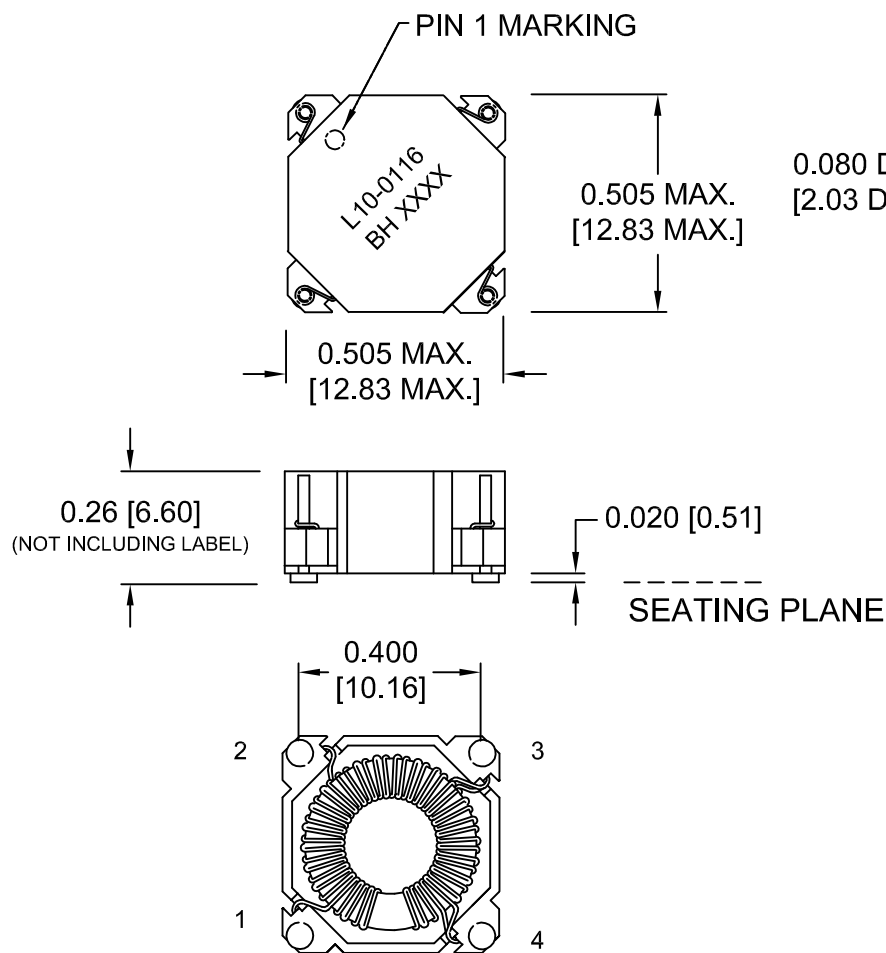
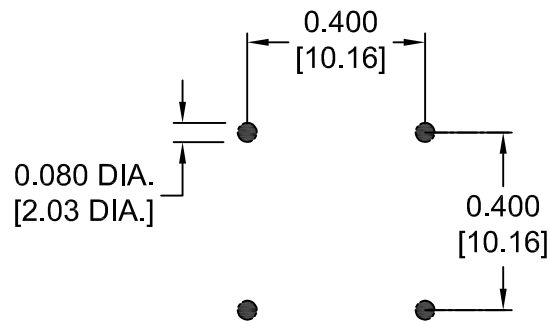


MECHANICAL

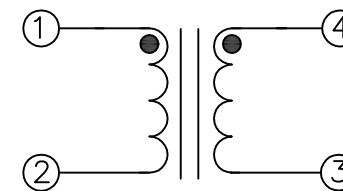


COPLANARITY 0.004" [0.102]

RECOMMENDED PC BOARD LAYOUT



SCHEMATIC



ELECTRICAL SPECIFICATIONS

TURNS RATIO: 6:1

OPEN CIRCUIT INDUCTANCE: 500µH±10% @ 0 ADC (1, 4 - 2, 3)
10 KHz 100mV

DC BIAS: 400µH TYP. @ 0.70 ADC (1, 4 - 2, 3)
10 KHz 100mV

DC RESISTANCE: 2.00 OHMS MAX. (1-2)
0.059 OHMS MAX. (4-3)


HIGH VOLTAGE TEST: 1500 VAC (1-4)

PRIMARY LEAKAGE INDUCTANCE: 7.32µH NOM. (1-2) (SH 4, 3)
120 KHz 50mV

RoHS Compliant

ISSUE	DATE	REVISION	BY
E	2-5-15	FIX ERRORS ON PRINT	JDC
D	9-5-13	REVISE LABEL	JDC
C	8-9-11	Q12786-7 NOW L10-0116	JDC
B	5-10-11	REVISE BUILD	JDC
A	5-3-11	CUSTOMER PRINT	JDC

DESIGN PER:	BH CATALOG
<input type="checkbox"/> CUSTOM	<input checked="" type="checkbox"/> NON-PROPRIETARY
DRAWN:	K. LOFTUS
ENGR:	J. DECRAMER
UNLESS OTHERWISE SPECIFIED: DIMENSIONS IN INCHES, TOLERANCES NON-CUMULATIVE .XX±.01 .XXX±.005	
PAGE 1 OF 2	

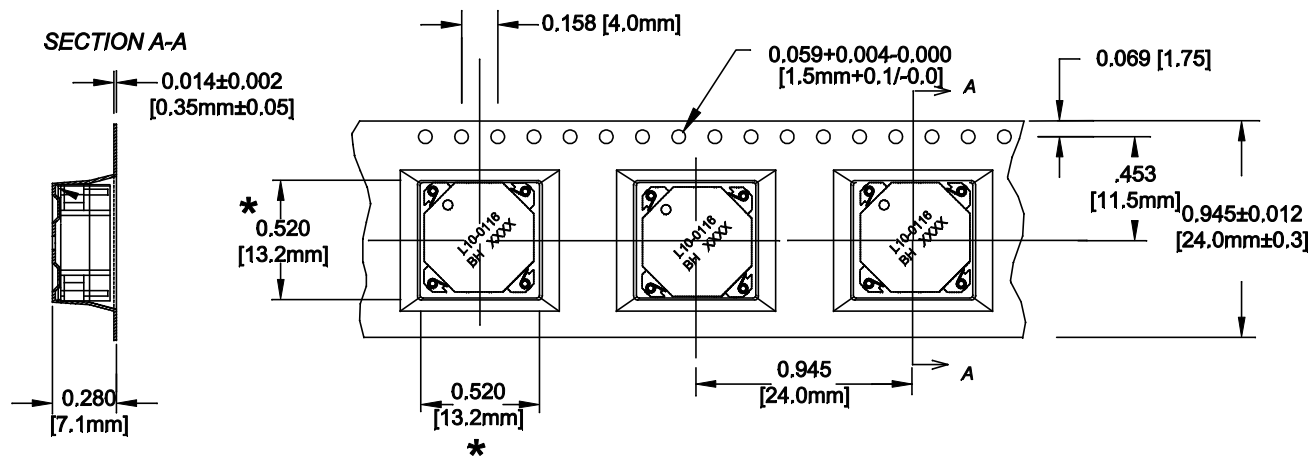


BH® BH ELECTRONICS, INC.
BURNSVILLE & MARSHALL, MN


© 1998 BH Electronics

TITLE: **QTR PAK™**
(Switching Regulator)

PART NO. **L10-0116**



CARRIER TAPE 811-0137

				DESIGN PER:	BH CATALOG	 BH ELECTRONICS, INC. BURNSVILLE & MARSHALL, MN © 1998 BH Electronics
				<input type="checkbox"/> CUSTOM <input checked="" type="checkbox"/> NON-PROPRIETARY		
E	2-5-15	FIX ERRORS ON PRINT	JDC	DRAWN:	K. LOFTUS	TITLE: QTR PAK™ (Switching Regulator)
D	9-5-13	REVISE LABEL		ENGR:	J. DECRAMER	
C	8-9-11	Q12786-7 NOW L10-0116	JDC	UNLESS OTHERWISE SPECIFIED: DIMENSIONS IN INCHES, TOLERANCES NON-CUMULATIVE .XX±.01 .XXX±.005		PART NO. L10-0116
B	5-10-11	REVISE BUILD	JDC			
A	5-3-11	CUSTOMER PRINT	JDC	PAGE 2 OF 2		
ISSUE	DATE	REVISION	BY			