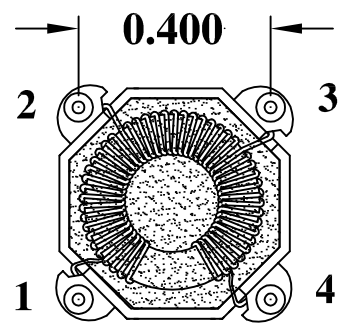
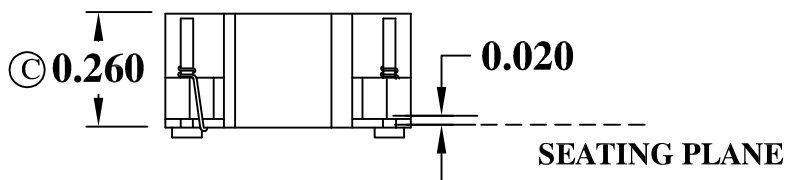
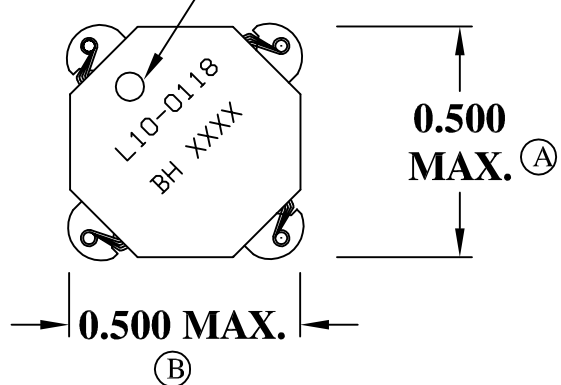


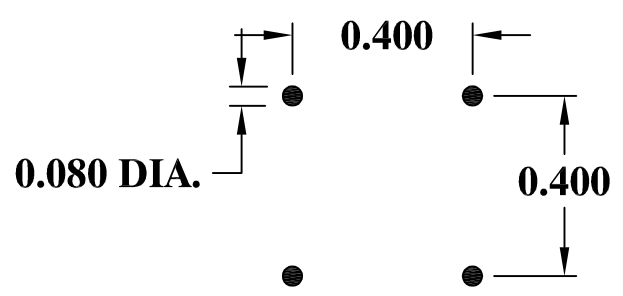
MECHANICAL

PIN 1 MARKING

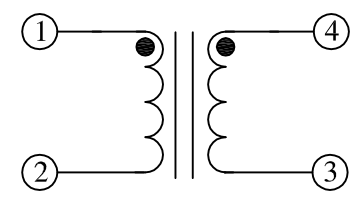


△ COPLANARITY 0.004

RECOMMENDED PC BOARD LAYOUT




SCHEMATIC

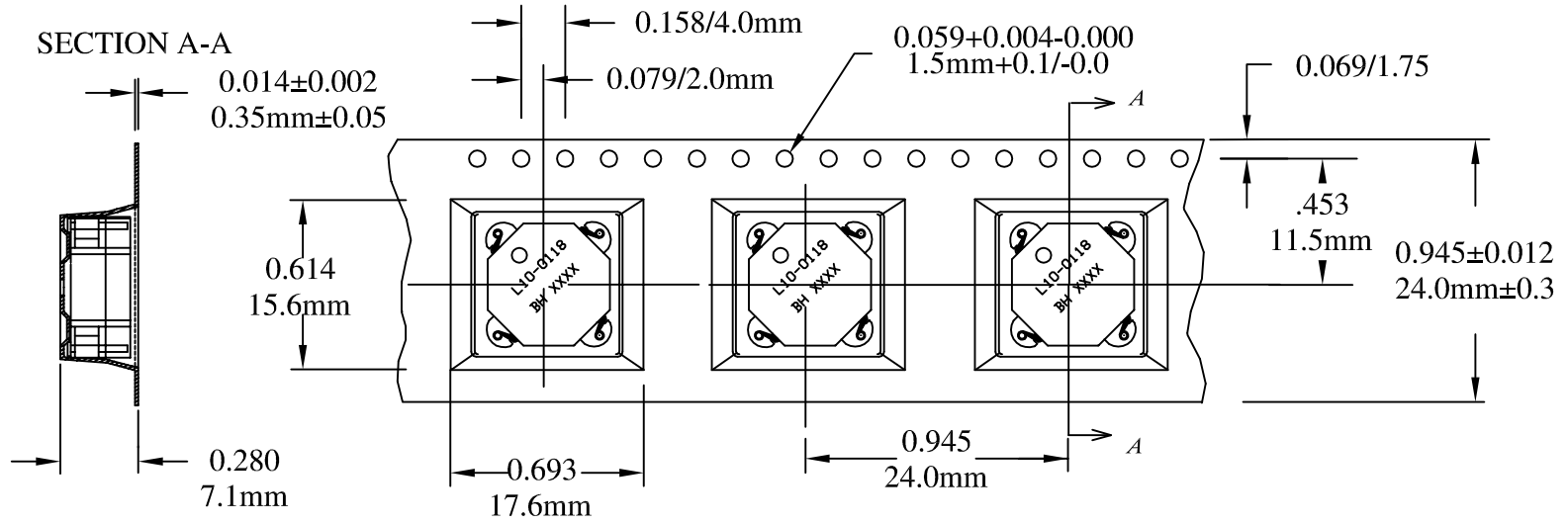


ELECTRICAL SPECIFICATIONS


- URNS RATIO: 3:1
- OPEN CIRCUIT INDUCTANCE: 33.9μH ±20% (1-2)  
100 KHz 100mV
- PRIMARY LEAKAGE INDUCTANCE: 650nH MAX. (1-2 SH 3,4)  
120 KHz 50mV
- DC RESISTANCE: 0.146 OHMS NOM. (1-2) 0.017 OHMS NOM. (4-3)
- INTERWINDING CAPACITANCE: 42pF NOM. (1-4) 120 KHz 50mV
- HIGH VOLTAGE TEST: 1500 VAC / 1 MIN. (1-4)
- LOC WITH BIAS: 27.14μH TYP. @ 2.37 ADC (1-2) 10 KHz 100mV

RoHS COMPLIANT

				DESIGN PER:	BH CATALOG		 BH ELECTRONICS, INC. BURNSVILLE & MARSHALL, MN © 1998 BH Electronics
				<input type="checkbox"/> CUSTOM	<input type="checkbox"/> NON-PROPRIETARY	<input checked="" type="checkbox"/> X	
				DRAWN:	K. LOFTUS		
				ENGR:	J. DECRAMER		
B	10-13-11	WAS Q12925B NOW L10-0118	JDC	UNLESS OTHERWISE SPECIFIED: DIMENSIONS IN INCHES, TOLERANCES NON-CUMULATIVE .XX±.01 .XXX±.005		TITLE:	QTR PAK (Switching Regulator) <sup>TM</sup>
A	10-11-11	CUSTOMER PRINT				PART NO.	L10-0118
ISSUE	DATE	REVISION	BY			PAGE 1 OF 2	



CARRIER TAPE 811-0137

				DESIGN PER:	 <b>BH ELECTRONICS, INC.</b> BURNSVILLE & MARSHALL, MN © 1998 BH Electronics
				<b>BH CATALOG</b>	
				<input type="checkbox"/> CUSTOM <input checked="" type="checkbox"/> NON-PROPRIETARY	
				DRAWN: K. LOFTUS	
				ENGR: J. DECRAMER	
B	10-13-11	WAS Q12925B NOW L10-0118	JDC	UNLESS OTHERWISE SPECIFIED: DIMENSIONS IN INCHES, TOLERANCES NON-CUMULATIVE .XX±.01 .XXX±.005	TITLE: <b>QTR PAK</b> ™ (Switching Regulator)
A	10-11-11	CUSTOMER PRINT			PART NO. <b>L10-0118</b>
ISSUE	DATE	REVISION	BY		