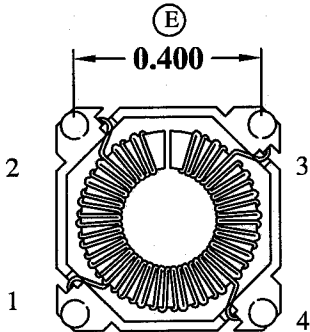
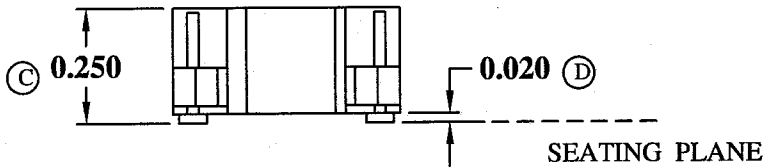
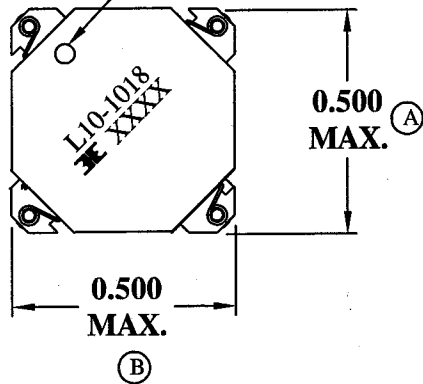
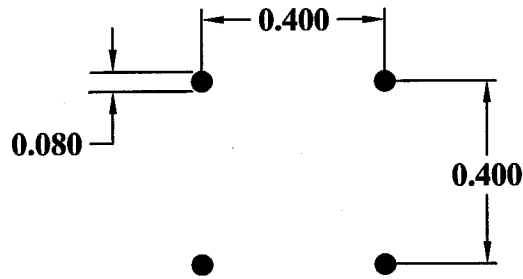


MECHANICAL

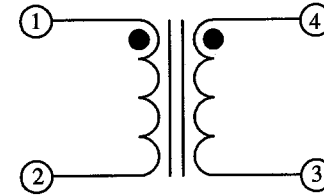
PIN 1 MARKING



RECOMMENDED PC BOARD LAYOUT



SCHEMATIC



ELECTRICAL SPECIFICATIONS

TURNS RATIO: 1:1

OPEN CIRCUIT INDUCTANCE: 12.1 - 18.0uH (1-2)

10 KHz 100mV

DC BIAS: 12.06uH TYP. @ 3.56 ADC (1-2) 10 KHz 100mV

DC RESISTANCE: (1-2) 0.0680 OHMS NOM.

(4-3) 0.0680 OHMS NOM.

IR: 100 VDC (1-4) 1K MEGOHMS MIN.

RoHS Compliant

DESIGNED PER:

BH CATALOG

DRAWN Kathy Loftus

ENGR. J. DECRAMER

UNLESS OTHERWISE SPECIFIED:
DIMENSIONS IN INCHES, TOLERANCES
NON-CUMULATIVE.

.XXX±.005

PAGE 1 OF 2



® BH Electronics, Inc.
Burnsville & Marshall, MN

© 1998 BH Electronics

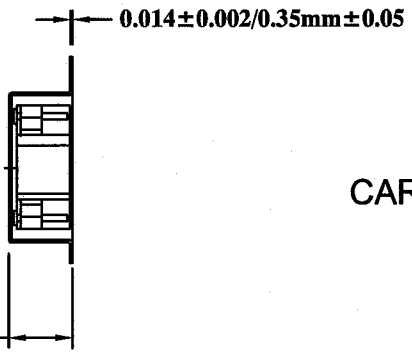
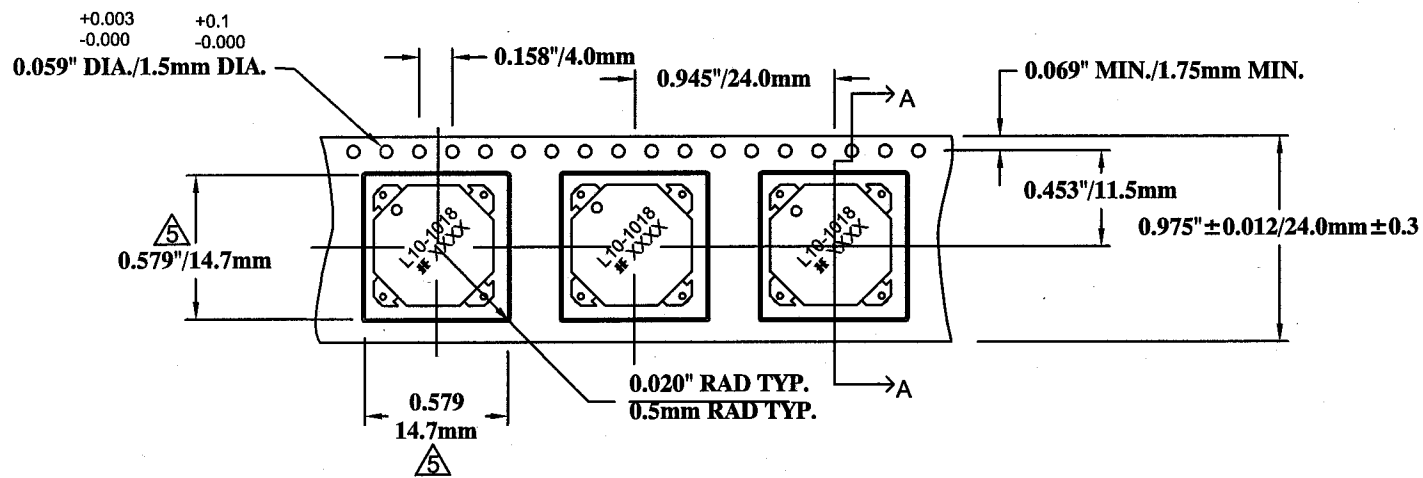
TITLE:

QTR PAK™
(Switching Regulator)

PART NO.


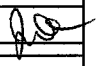
L10-1018

A	9-8-05	CUSTOMER PRINT	<i>Jde</i>
ISSUE	DATE	REVISION	BY



CARRIER TAPE 811-0137

SECTION A-A

				DESIGNED PER:	 BH Electronics. Inc. Burnsville & Marshall, MN © 1998 BH Electronics
				BH CATALOG	
				DRAWN Kathy Loftus	TITLE: QTR PAK™ (Switching Regulator)
				ENGR. J. DECRAMER	
				UNLESS OTHERWISE SPECIFIED: DIMENSIONS IN INCHES, TOLERANCES NON-CUMULATIVE. .XXX±.005	PART NO. L10-1018
A	9-8-05	CUSTOMER PRINT		PAGE 2 OF 2	
ISSUE	DATE	REVISION	BY		