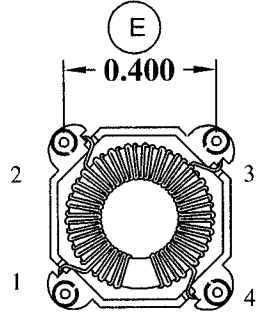
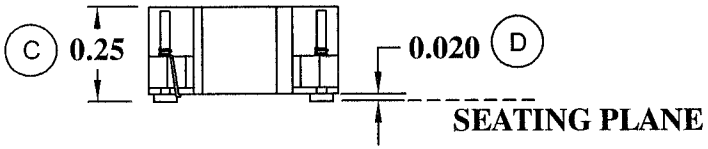
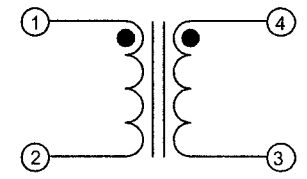
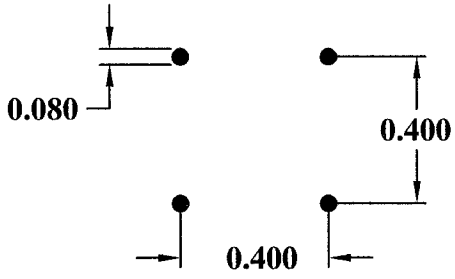
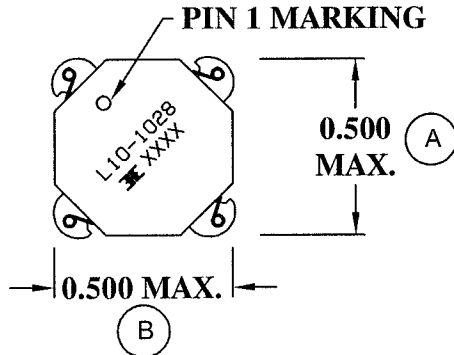


MECHANICAL

RECOMMENDED PC BOARD LAYOUT

SCHEMATIC




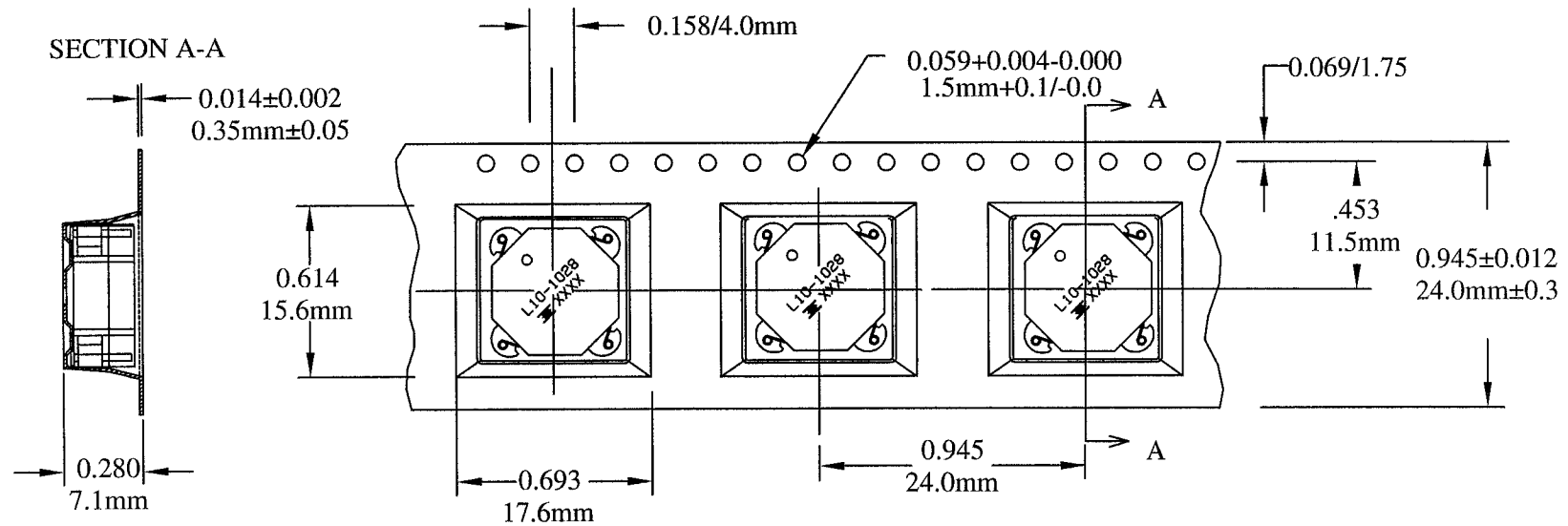
COPLANARITY 0.004"

ELECTRICAL SPECIFICATIONS


TURNS RATIO: 1:1  
 OPEN CIRCUIT INDUCTANCE: 48.26 - 72.38μH @ 0 ADC (1-2)  
 10 KHz 100mV  
 DC BIAS: 48.26μH TYP. @ 1.78 ADC (1-2)  
 10 KHz 100mV  
 DC RESISTANCE: (1-2) 0.2727 OHMS NOM.  
 (4-3) 0.2727 OHMS NOM.  
 IR: 100 VDC (1-4) 1K MEGOHMS MIN.

RoHS Compliant

				DESIGNED PER:	 BH Electronics, Inc. Burnsville & Marshall, MN © 1998 BH Electronics		
				<b>BH CATALOG</b> CUSTOM      NON-PROPRIETARY <input checked="" type="checkbox"/>			
				DRAWN	Kathy Loftus		
				ENGR.	J. DECRAMER		
C	1-15-07	CHG GAP PLACEMENT	<i>JDC</i>	UNLESS OTHERWISE SPECIFIED: DIMENSIONS IN INCHES, TOLERANCES NON-CUMULATIVE. .XX±.01 .XXX±.005		TITLE:	<b>QTR PAK™</b> (Inductor, Switching Regulator)
B	9-13-05	ADD RoHS COMPLIANT	JDC			PART NO.	<b>L10-1028</b>
A	3-16-05	CUSTOMER PRINT	JDC				
ISSUE	DATE	REVISION	BY	PAGE 1 OF 2			



CARRIER TAPE 811-0137

				DESIGNED PER: <b>BH CATALOG</b>	 ® BH Electronics, Inc. Burnsville & Marshall, MN © 1998 BH Electronics
				<input type="checkbox"/> CUSTOM <input checked="" type="checkbox"/> NON-PROPRIETARY	
				DRAWN Kathy Loftus	TITLE: <b>QTR PAK™</b> (Switching Regulator) PART NO. <b>L10-1028</b>
				ENGR. J. DECRAMER	
				UNLESS OTHERWISE SPECIFIED: DIMENSIONS IN INCHES, TOLERANCES NON-CUMULATIVE. .XX±.01 .XXX±.005	
				PAGE 2 OF 2	
C	1-15-07	CHG GAP PLACEMENT			
B	9-13-05	ADD RoHS COMPLIANT	JDC		
A	5-19-05	CUSTOMER PRINT	JDC		
ISSUE	DATE	REVISION	BY		