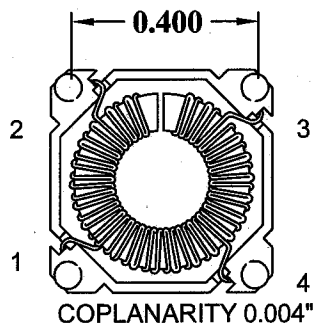
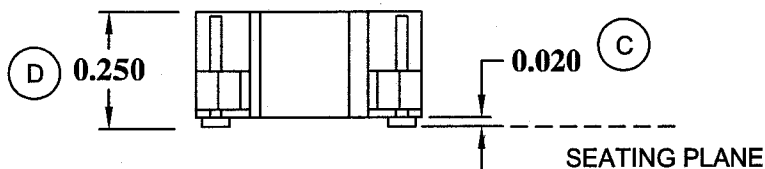
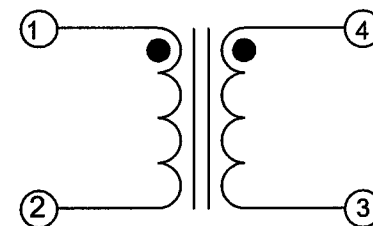
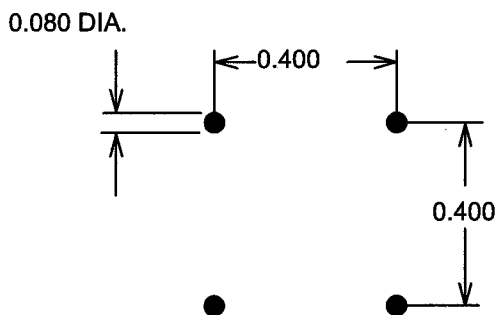
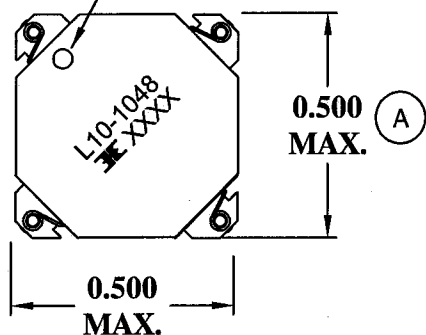


MECHANICAL

PIN 1 MARKING

RECOMMENDED PC BOARD LAYOUT

SCHEMATIC



ELECTRICAL SPECIFICATIONS

URNS RATIO: 1:1

OPEN CIRCUIT INDUTANCE: 218-327uH @ 0 ADC (1, 4 - 2, 3)

217.91uH TYP. @ 0.84 ADC (1, 4 - 2, 3)

10 KHz 100mV

DC RESISTANCE: 1.1567 OHMS NOM. (1-2)

1.1567 OHMS NOM. (4-3)

IR: 1K MEGOHMS MIN. @ 100 VDC (1-4)

RoHS Compliant

DESIGNED PER:

**BH CATALOG**

DRAWN Kathy Loftus

ENGR. J. DECRAMER

UNLESS OTHERWISE SPECIFIED:  
DIMENSIONS IN INCHES, TOLERANCES  
NON-CUMULATIVE.

.XX±.01 .XXX±.005

PAGE 1 OF 2



® BH Electronics, Inc.  
Burnsville & Marshall, MN

© 1998 BH Electronics

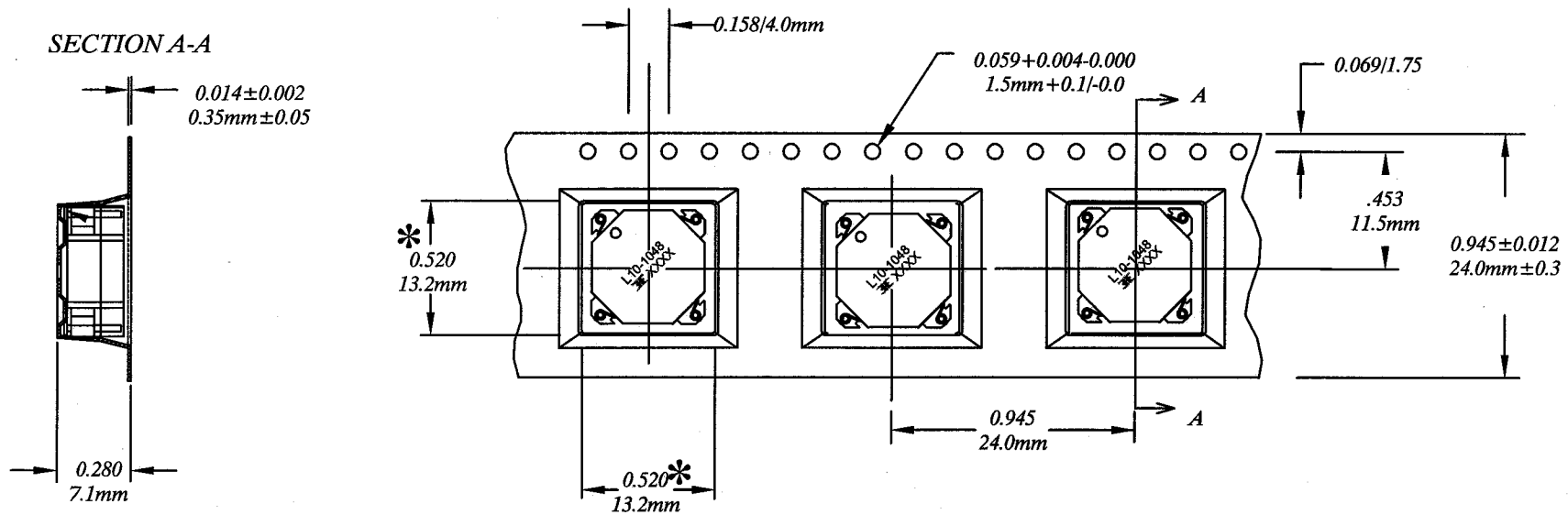
TITLE:

**QTR PAK™**  
(Switching Regulator)


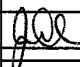
PART NO.

**L10-1048**

A	2-18-98	CUSTOMER PRINT	<i>[Signature]</i>
ISSUE	DATE	REVISION	BY



CARRIER TAPE 811-0137

				DESIGNED PER: <b>BH CATALOG</b>	 ® BH Electronics, Inc. Burnsville & Marshall, MN © 1998 BH Electronics
				DRAWN Kathy Loftus	
				ENGR. J. DECRAMER	TITLE: <b>QTR PAK™</b> (Switching Regulator)
				UNLESS OTHERWISE SPECIFIED: DIMENSIONS IN INCHES, TOLERANCES NON-CUMULATIVE. .XX±.01 .XXX±.005	PART NO. <b>L10-1048</b>
A	8-29-05	CUSTOMER PRINT		PAGE 2 OF 2	
ISSUE	DATE	REVISION	BY		