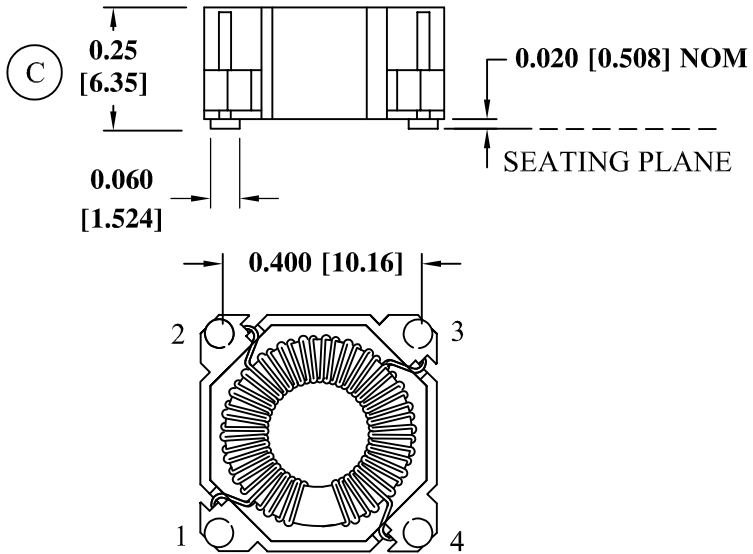
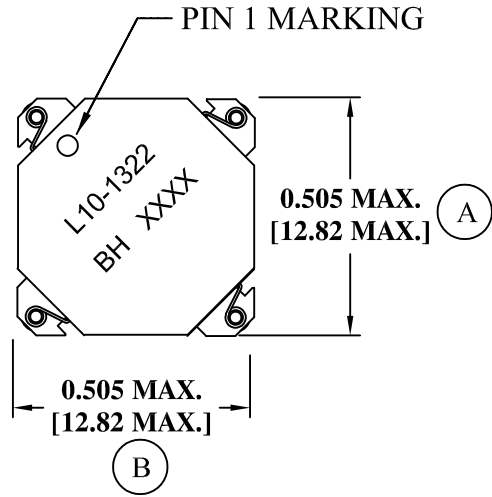
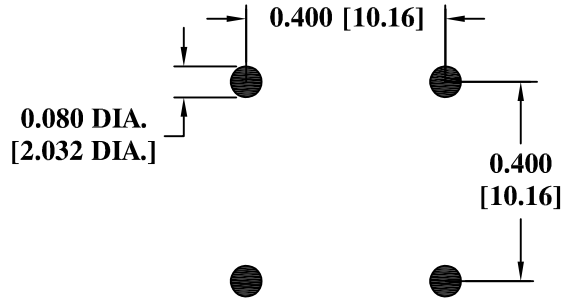


MECHANICAL

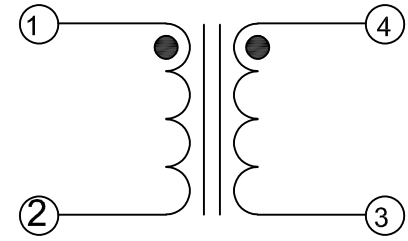


COPLANARITY 0.004" [0.1016]

RECOMMENDED PC BOARD LAYOUT



SCHEMATIC



ELECTRICAL SPECIFICATIONS

TURNS RATIO: 1:1

OPEN CIRCUIT INDUCTANCE: 23.65 - 35.47µH @ 0 ADC 10 KHz 100mV (1-2)

DC BIAS: 23.65uH TYP. @ 2.54 ADC 10 KHz 100mV (1-2)

DC RESISTANCE: 0.1333 OHMS NOM. (1-2) (4-3)

HIGH VOLTAGE TEST: 3000 VAC / 1 SEC. WITH 5 SEC. RAMP-UP (1-4)

RoHS Compliant

ISSUE	DATE	REVISION	BY
F	5-23-19	UPDATE MECHANICALS	<i>nys</i>
E	12-01-16	ECR# 10412 UPDATE PRINT	JDC
D	12-13-12	REVISE LABEL	JDC
C	10-25-11	UPDATE ELECTRICALS	JDC
B	6-29-11	Q12838 NOW L10-1322	JDC
A	3-7-11	CUSTOMER PRINT	JDC

DESIGNED PER:	BH CATALOG
<input type="checkbox"/> CUSTOM	<input checked="" type="checkbox"/> NON-PROPRIETARY
DRAWN	Kathy Loftus
ENGR.	J. DECRAMER
UNLESS OTHERWISE SPECIFIED: DIMENSIONS IN INCHES, TOLERANCES NON-CUMULATIVE. .XX±.01 .XXX±.005	
PAGE 1 OF 2	

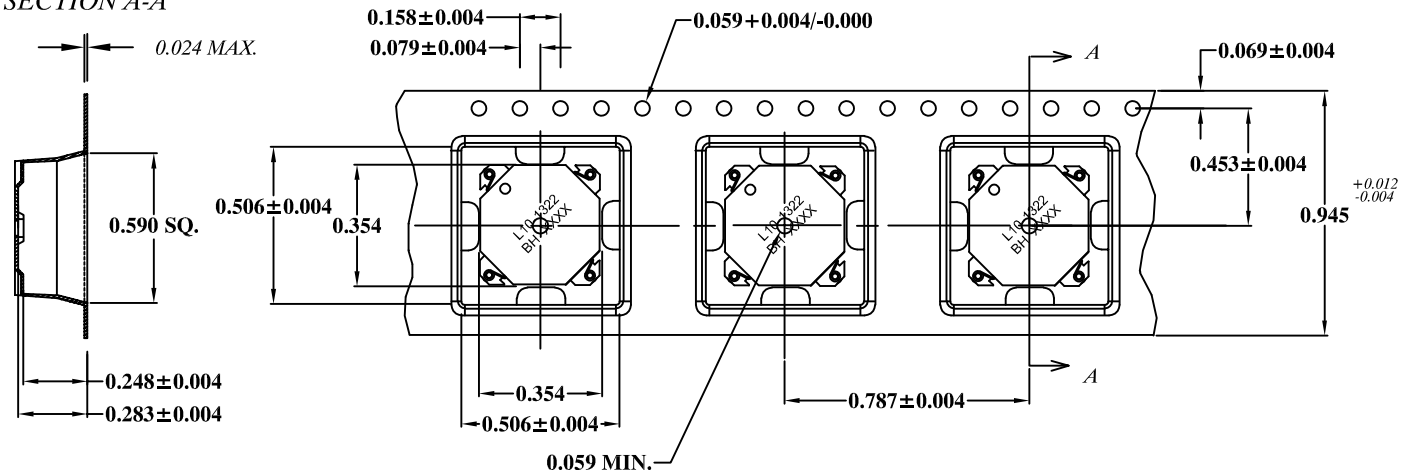
BH [®] BH Electronics, Inc.
Burnsville & Marshall, MN

© 1998 BH Electronics


TITLE: **QTR PAK™**
(Switching Regulator)

PART NO. **L10-1322**

SECTION A-A



CARRIER TAPE 811-0261

				DESIGNED PER:		 (R) BH Electronics, Inc. Burnsville & Marshall, MN © 1998 BH Electronics	
				BH CATALOG <input type="checkbox"/> CUSTOM <input checked="" type="checkbox"/> NON-PROPRIETARY			
F	5-23-19	UPDATE MECHANICALS	<i>nysd</i>	DRAWN Kathy Loftus		TITLE: QTR PAK™ (Switching Regulator)	
E	12-01-16	ECR# 10412 UPDATE PRINT	JDC	ENGR. J. DECRAMER			
D	12-13-12	REVISE LABEL	JDC	UNLESS OTHERWISE SPECIFIED: DIMENSIONS IN INCHES, TOLERANCES NON-CUMULATIVE. .XX±.01 .XXX±.005		PART NO. L10-1322	
C	10-25-11	UPDATE ELECTRICALS	JDC				
B	6-29-11	Q12838 NOW L10-1322	JDC				
A	3-7-11	CUSTOMER PRINT	JDC	PAGE 2 OF 2			
ISSUE	DATE	REVISION	BY				