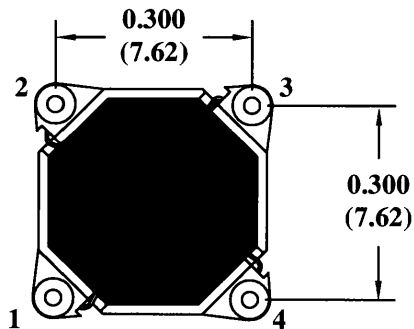
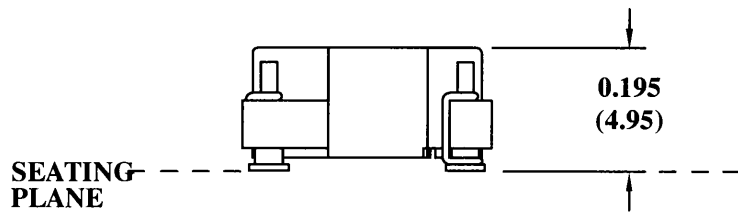
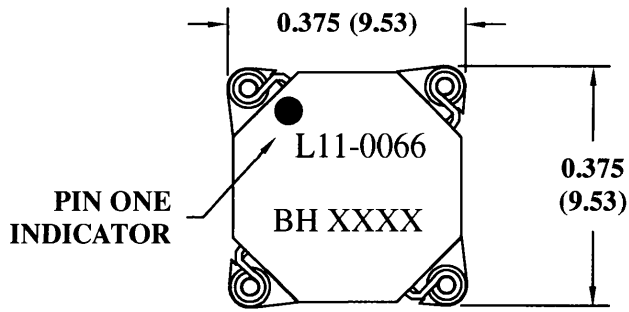
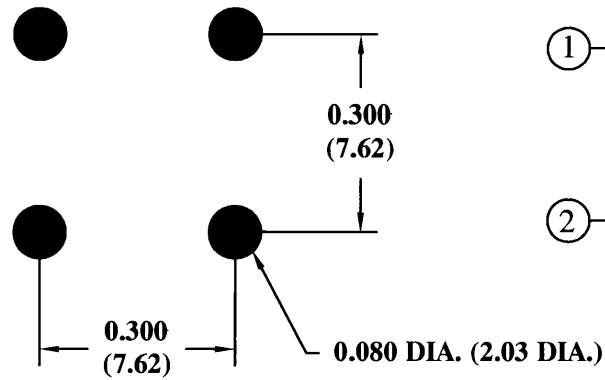


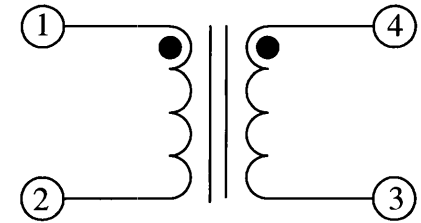
MECHANICAL



RECOMMENDED PC BOARD LAYOUT



SCHEMATIC



ELECTRICAL SPECIFICATIONS


TURNS RATIO: 4:1

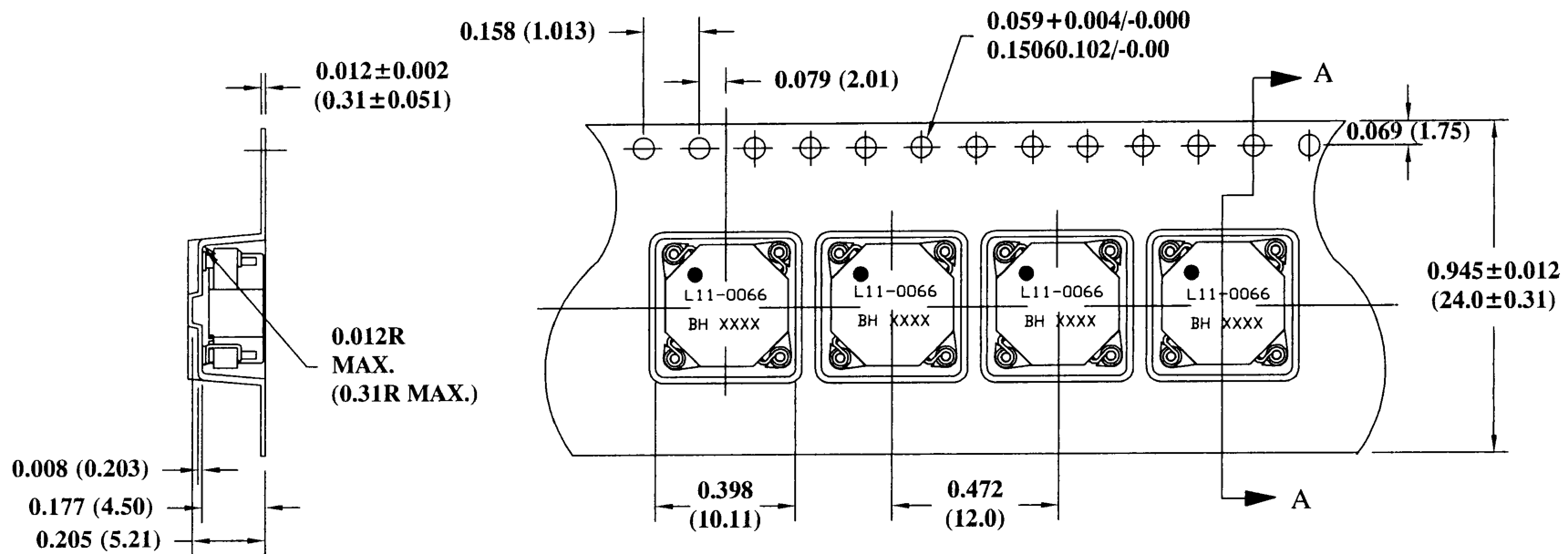
OPEN CIRCUIT INDUCTANCE: 167 $\mu$ H  $\pm$ 20% (1-2) 10 KHz 100mV  
11.280 $\mu$ H NOM. (4-3)

DC BIAS: 139 $\mu$ H NOM. (1-2) @ 0.5 ADC 10 KHz 100mV


DC RESISTANCE: 2.094 OHMS NOM. (1-2)  
0.8571 OHMS NOM. (4-3)

HIGH VOLTAGE TEST: 3000 VAC (1-4)

				DESIGN PER:		 <b>BH ELECTRONICS, INC.</b> BURNSVILLE & MARSHALL, MN  © 1998 BH Electronics
				<b>BH CATALOG</b>		
				CUSTOM	NON-PROPRIETARY <input checked="" type="checkbox"/>	
				DRAWN: K. LOFTUS		
D	4-4-11	ADD METRIC		ENGR: J. DECRAMER		TITLE: <b>TRANSFORMER</b>
C	1-17-11	ASSIGN BH P/N WAS Q12786	JDC	UNLESS OTHERWISE SPECIFIED: DIMENSIONS IN INCHES, TOLERANCES NON-CUMULATIVE .XX $\pm$ .01 .XXX $\pm$ .005		
B	10-12-10	INCREASE HI-POT TO 3KV	JDC			
A	10-7-10	CUSTOMER PRINT				
ISSUE	DATE	REVISION	BY	PAGE 1 OF 2		PART NO. <b>L11-0066</b>



CARRIER TAPE 811-0187

				DESIGN PER:		 <b>BH ELECTRONICS, INC.</b> BURNSVILLE & MARSHALL, MN © 1998 BH Electronics	
				<b>LT CORPORATION</b>			
				CUSTOM	NON-PROPRIETARY		<input checked="" type="checkbox"/>
				DRAWN: K. LOFTUS			
D	4-4-11	ADD METRIC		ENGR: J. DECRAMER		TITLE:	
C	1-17-11	ASSIGN BH P/N WAS Q12786	JDC	UNLESS OTHERWISE SPECIFIED: DIMENSIONS IN INCHES, TOLERANCES NON-CUMULATIVE .XX±.01 .XXX±.005		<b>TRANSFORMER</b>	
B	10-12-10	INCREASE HI-POT TO 3KV	JDC				
A	10-7-10	CUSTOMER PRINT					
ISSUE	DATE	REVISION	BY	PAGE 2 OF 2		PART NO.	
						<b>L11-0066</b>	