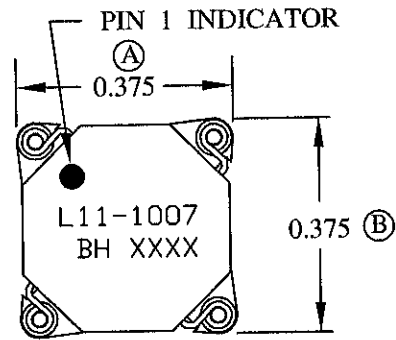
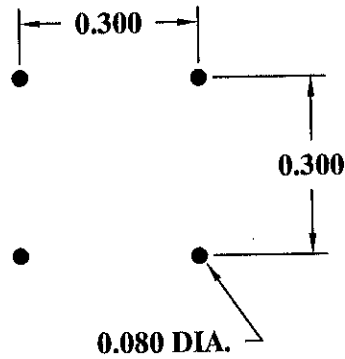


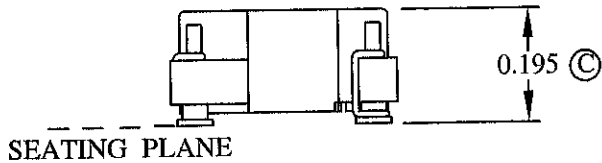
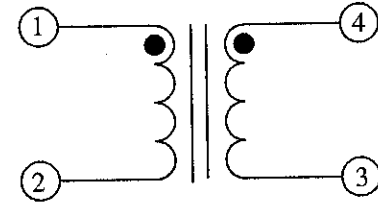
MECHANICAL



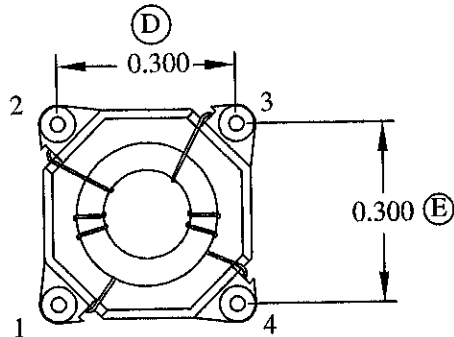
RECOMMENDED PC BOARD LAYOUT



SCHEMATIC



COPLANARITY TM0070  $\triangle$



ELECTRICAL SPECIFICATIONS

URNS RATIO: 1:1

OPEN CIRCUIT INDUCTANCE:  $0.56\mu\text{H} \pm 20\%$  @ 0 ADC (1, 4 - 2, 3)  
 10 KHz 100mV

DC BIAS:  $0.45\mu\text{H}$  TYP. @ 8.11 ADC (1, 4 - 2, 3)  
 10 KHz 100mV

DC RESISTANCE: 0.0034 OHMS NOM. (1-2) (4-3)

IR: 1K MEGOHMS MIN. @ 100 VDC (1-4)

RoHS Compliant

DESIGN PER:

BH CATALOG

DRAWN: K. LOFTUS

ENGR: J. DECRAMER

UNLESS OTHERWISE SPECIFIED:  
 DIMENSIONS IN INCHES, TOLERANCES  
 NON-CUMULATIVE  
 .XX±.01 .XXX±.005

PAGE 1 OF 2



BH ELECTRONICS, INC.  
 BURNSVILLE & MARSHALL, MN

© 1998 BH Electronics

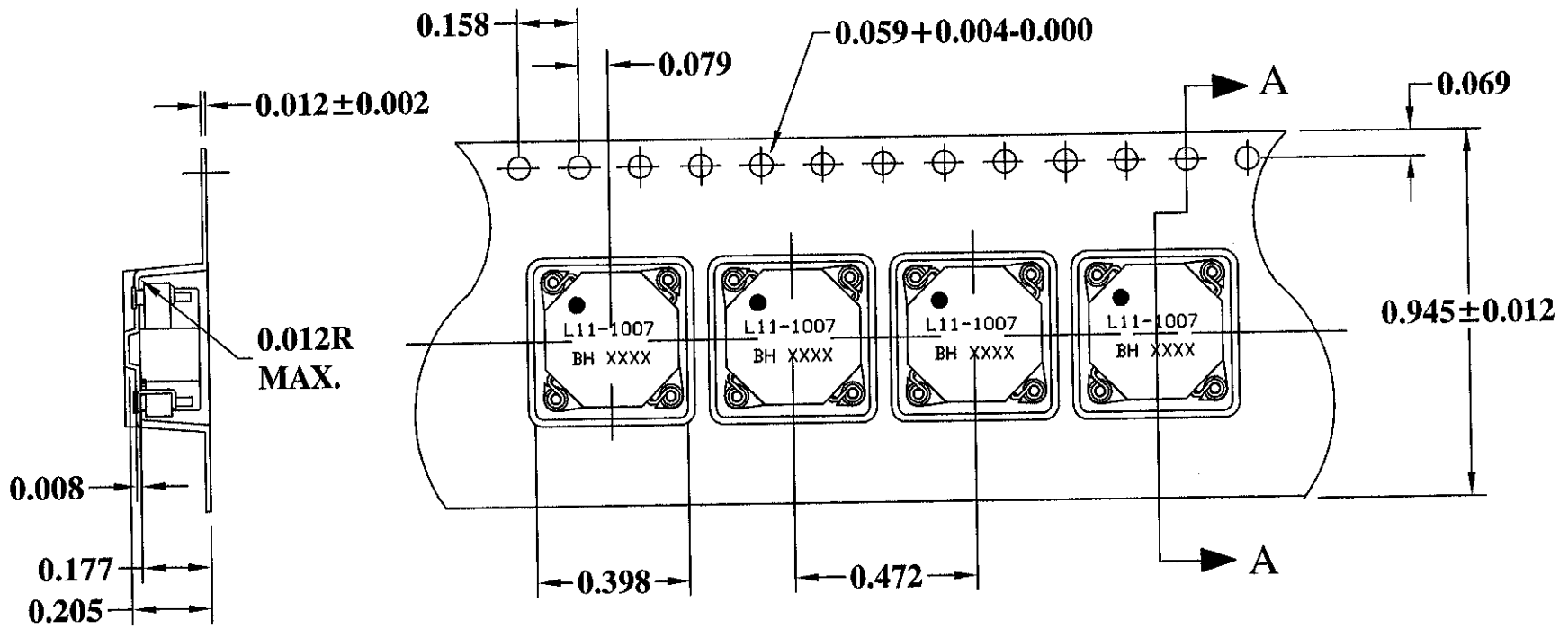
TITLE:

TRANSFORMER

PART NO.

L11-1007

A	8-24-05	CUSTOMER PRINT	<i>me</i>
ISSUE	DATE	REVISION	BY



811-0187

DESIGN PER:

BH CATALOG

DRAWN: K. LOFTUS

ENGR: J. DECRAMER

UNLESS OTHERWISE SPECIFIED:  
 DIMENSIONS IN INCHES, TOLERANCES  
 NON-CUMULATIVE  
 .XX±.01 .XXX±.005

PAGE 2 OF 2



BH ELECTRONICS, INC.  
 BURNSVILLE & MARSHALL, MN

© 1998 BH Electronics

TITLE:  
 TRANSFORMER

PART NO.  
 L11-1007

ISSUE	DATE	REVISION	BY
A	8-24-05	CUSTOMER PRINT	