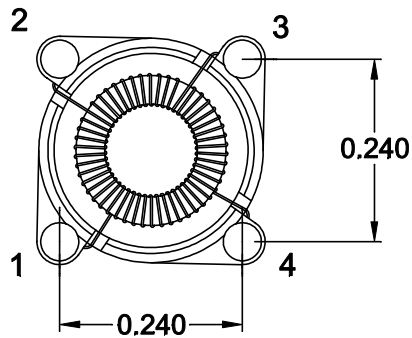
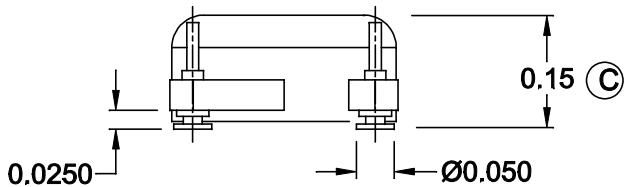
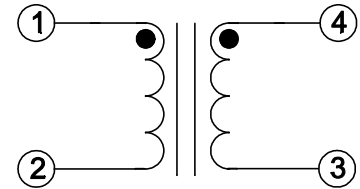
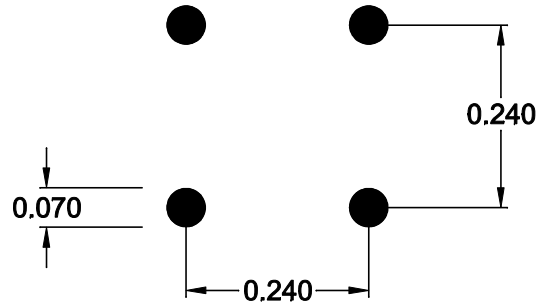
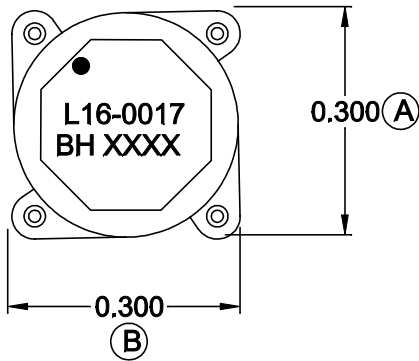


MECHANICAL

SUGGESTED PAD LAYOUT

SCHEMATIC



COPLANARITY 0.004 MAX.

ELECTRICAL SPECIFICATIONS

URNS RATIO: 1:1

OPEN CIRCUIT INDUCTANCE: 10.44-15.66 μ H @ 0 ADC (1-2) (SH 1, 4) (SH 2, 3)
10 KHz 100mV

DC BIAS: 10.44 μ H TYP. @ 2.14 ADC (1-2) (SH 1, 4) (SH 2, 3)
10 KHz 100mV

DC RESISTANCE: 0.38 OHMS MAX. (1-2) (SH 1, 4) (SH 2, 3)

HIGH VOLTAGE TEST: 1500 VRMS (1-4)

DESIGN PER:

BH CATALOG

CUSTOM NON-PROPRIETARY

DRAWN: K. LOFTUS

ENGR: J. DECRAMER

UNLESS OTHERWISE SPECIFIED:
DIMENSIONS IN INCHES, TOLERANCES
NON-CUMULATIVE
.XX \pm .01 .XXX \pm .005

PAGE 1 OF 2



BH ELECTRONICS, INC.
BURNSVILLE & MARSHALL, MN

© 1998 BH Electronics

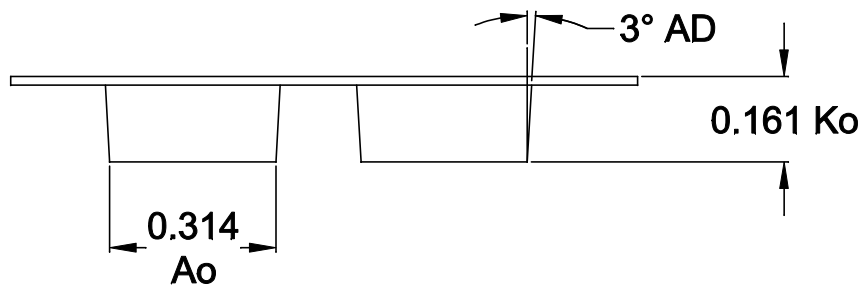
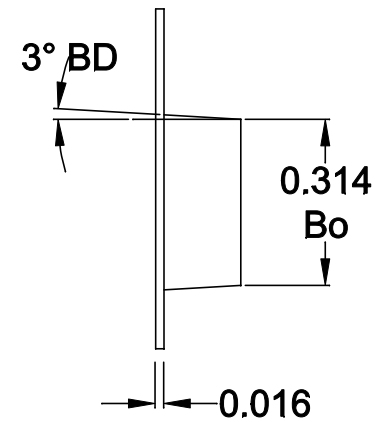
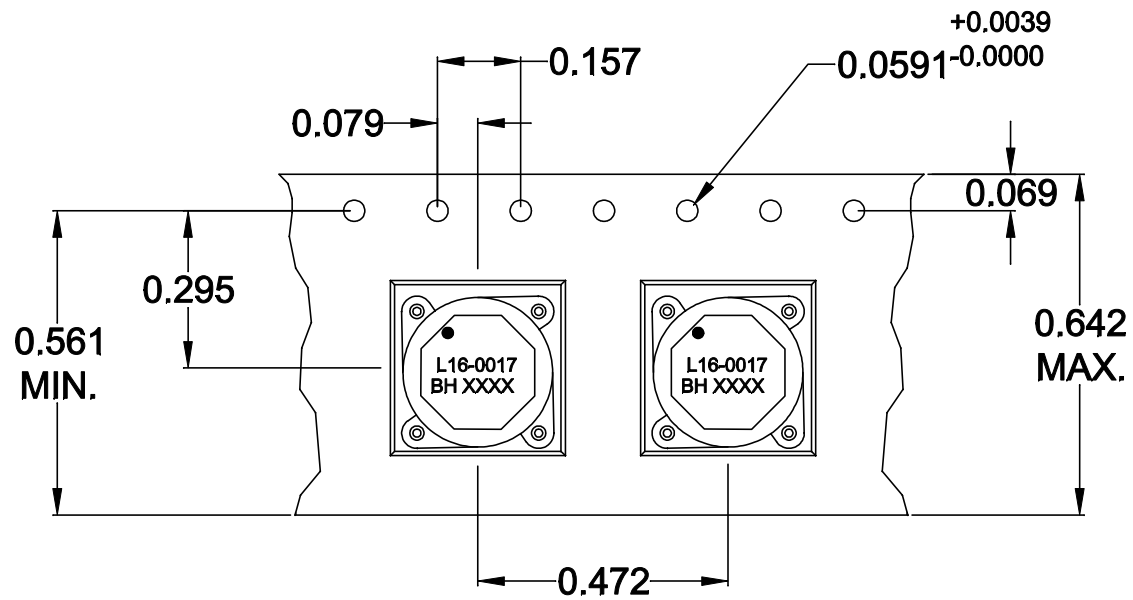
TITLE:

INDUCTOR


PART NO.

L16-0017

B	3-3-11	DIMENSION CHANGES	JDC
A	12-10-08	CUSTOMER PRINT (Q12520)	JDC
ISSUE	DATE	REVISION	BY



DESIGN PER:			
BH CATALOG			
<input type="checkbox"/>	CUSTOM	<input checked="" type="checkbox"/>	NON-PROPRIETARY
DRAWN:		K. LOFTUS	
ENGR:		J. DECRAMER	
UNLESS OTHERWISE SPECIFIED: DIMENSIONS IN INCHES, TOLERANCES NON-CUMULATIVE .XX±.01 .XXX±.005			
PAGE 2 OF 2			

	BH ELECTRONICS, INC. BURNSVILLE & MARSHALL, MN
	© 1998 BH Electronics
TITLE:	
INDUCTOR	
PART NO.	
L16-0017	

ISSUE	DATE	REVISION	BY
B	3-3-11	DIMENSION CHANGES	JDC
A	12-10-08	CUSTOMER PRINT (Q12520)	JDC