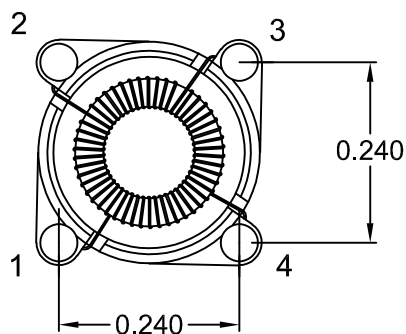
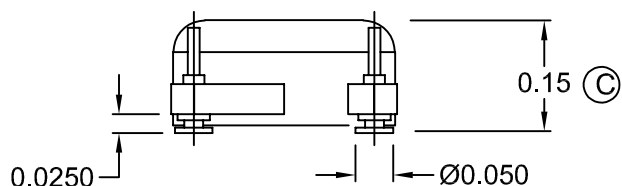
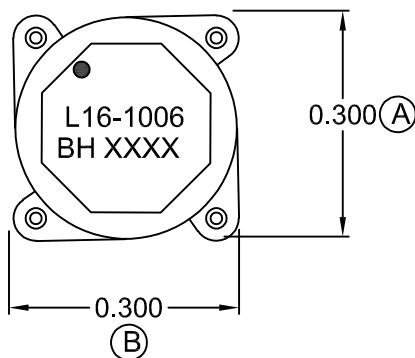
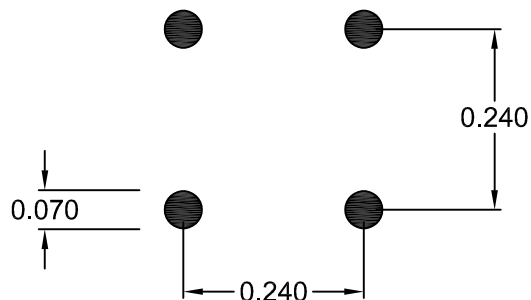


MECHANICAL

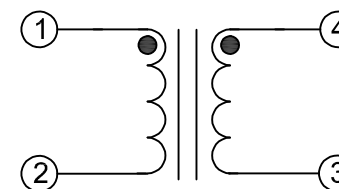


COPLANARITY 0.004 MAX.

SUGGESTED PAD LAYOUT



SCHEMATIC



ELECTRICAL SPECIFICATIONS

TURNS RATIO: 1:1

OPEN CIRCUIT INDUCTANCE: 2.27 - 3.41 μ H (1 - 2) (SH 1,4)(SH 2,3)

10 KHz 100mV

DC BIAS: 2.27 μ H TYP. @ 4.59 ADC (1, 4 - 2, 3)

10 KHz 100mV


DC RESISTANCE: 0.028 OHMS MAX. (1, 4 - 2, 3)

IR: 1K MEGOHMS MIN. @ 100 VDC (1-4)

RoHS COMPLIANT

| ISSUE | DATE | REVISION | BY |
|-------|----------|-------------------|------------|
| C | 6-6-18 | UPDATE ELECTRICAL | <i>nss</i> |
| B | 10-21-13 | PAD LAYOUT | JDC |
| A | 10-19-07 | CUSTOMER PRINT | JDC |

| | |
|--|---|
| DESIGN PER: | BH CATALOG |
| <input type="checkbox"/> CUSTOM | <input checked="" type="checkbox"/> NON-PROPRIETARY |
| DRAWN: | K. LOFTUS |
| ENGR: | J. DECRAMER |
| UNLESS OTHERWISE SPECIFIED: DIMENSIONS IN INCHES, TOLERANCES NON-CUMULATIVE .XX \pm .01 .XXX \pm .005 | |
| PAGE 1 OF 1 | |



[®] BH ELECTRONICS, INC.
BURNSVILLE & MARSHALL, MN

© 1998 BH Electronics

TITLE: **INDUCTOR**

PART NO. **L16-1006**