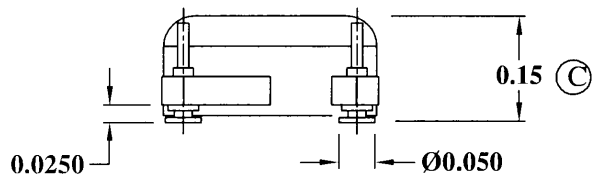
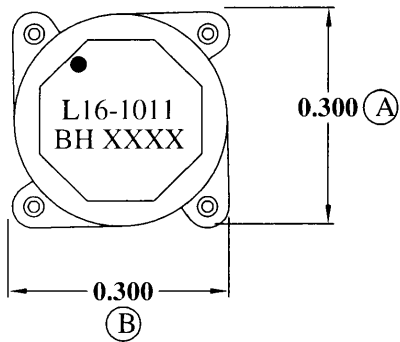
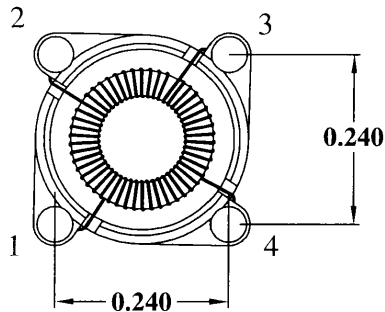


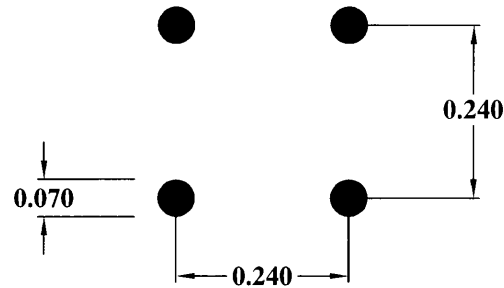
MECHANICAL



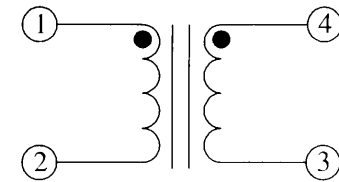
COPLANARITY 0.004 MAX.



SUGGESTED PAD LAYOUT



SCHEMATIC



ELECTRICAL SPECIFICATIONS

URNS RATIO: 1:1


OPEN CIRCUIT INDUCTANCE: 5.80µH±20% @ 0 ADC (1-2) (SH 1, 4) (SH 2, 3)
10 KHz 100mV

DC BIAS: 4.64µH TYP. @ 3.21 ADC (1-2) (SH 1, 4) (SH 2, 3)
10 KHz 100mV

DC RESISTANCE: 0.062 OHMS MAX. (1-2) (SH 1, 4) (SH 2, 3)

IR: 1K MEGOHMS MIN. @ 100 VDC (1-4)

RoHS COMPLIANT

				DESIGN PER:	BH CATALOG	 BH ELECTRONICS, INC. BURNSVILLE & MARSHALL, MN © 1998 BH Electronics
				<input type="checkbox"/> CUSTOM <input checked="" type="checkbox"/> NON-PROPRIETARY		
				DRAWN:	K. LOFTUS	TITLE: INDUCTOR
				ENGR:	J. DECRAMER	
B	11-3-11	ADD RoHS COMPLIANT	JDC	UNLESS OTHERWISE SPECIFIED: DIMENSIONS IN INCHES, TOLERANCES NON-CUMULATIVE .XX±.01 .XXX±.005		PART NO. L16-1011
A	10-19-07	CUSTOMER PRINT	JDC			
ISSUE	DATE	REVISION	BY	PAGE 1 OF 1		