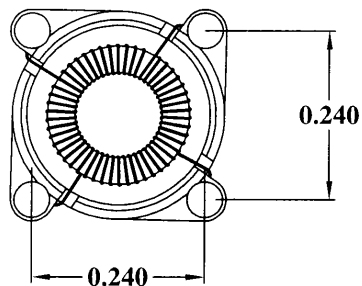
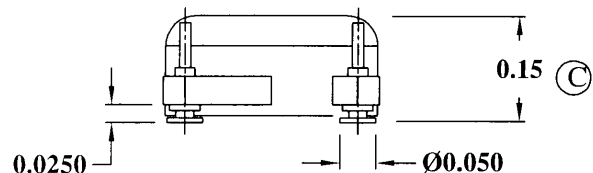
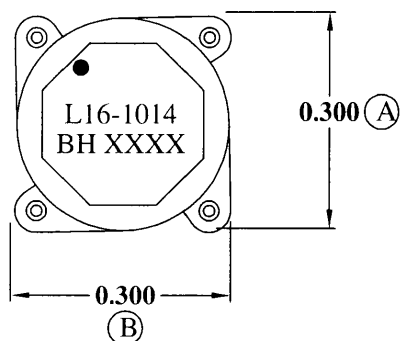


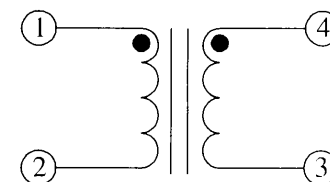
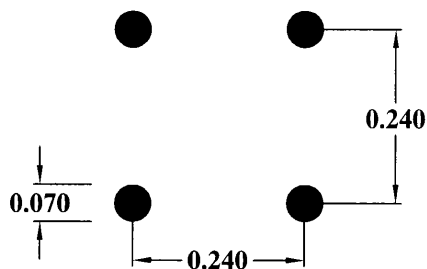
MECHANICAL

SUGGESTED PAD LAYOUT

SCHEMATIC



COPLANARITY 0.004 MAX.



ELECTRICAL SPECIFICATIONS

URNS RATIO: 1:1

OPEN CIRCUIT INDUCTANCE: 9.80 $\mu$ H $\pm$ 20% @ 0 ADC

(1-2) (SH 1, 4) (SH 2, 3) 10 KHz 100mV

DC BIAS: 7.84 $\mu$ H TYP. @ 2.47 ADC (1-2) (SH 1, 4) (SH 2, 3)

10 KHz 100mV

DC RESISTANCE: 0.102 OHMS NOM. (1-2) (SH 1, 4) (SH 2, 3)

IR: 1K MEGOHMS MIN. @ 100 VDC (1-4)

RoHS COMPLIANT

DESIGN PER:

BH CATALOG

CUSTOM  NON-PROPRIETARY

DRAWN: K. LOFTUS

ENGR: J. DECRAMER

UNLESS OTHERWISE SPECIFIED:  
DIMENSIONS IN INCHES, TOLERANCES  
NON-CUMULATIVE  
.XX $\pm$ .01 .XXX $\pm$ .005

PAGE 1 OF 1



BH ELECTRONICS, INC.  
BURNSVILLE & MARSHALL, MN

© 1998 BH Electronics

TITLE:

INDUCTOR

PART NO.

L16-1014

A	8-16-07	CUSTOMER PRINT	<i>gdc</i>
ISSUE	DATE	REVISION	BY