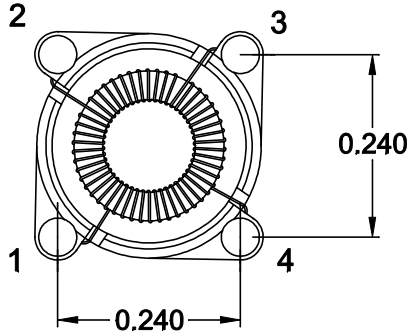
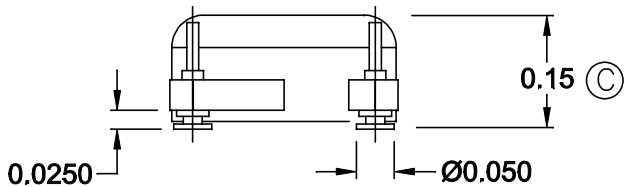
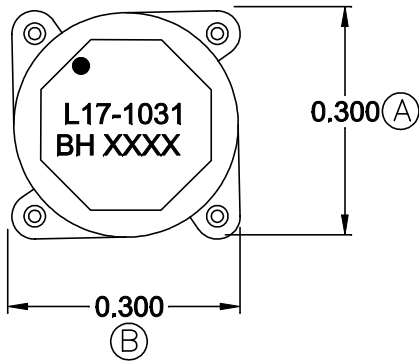
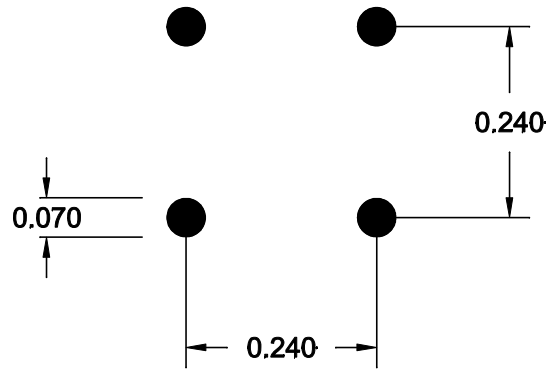


**MECHANICAL**

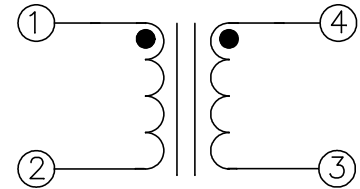


COPLANARITY 0.004 MAX.

**SUGGESTED PAD LAYOUT**



**SCHEMATIC**



**ELECTRICAL SPECIFICATIONS**

URNS RATIO: 1:1

OPEN CIRCUIT INDUCTANCE: 46.8  $\mu\text{H} \pm 10\%$  @ 0 ADC (1, 4 - 2, 3)  
10 KHz 100mV

DC BIAS: 30.4  $\mu\text{H}$  TYP. @ 1.03 ADC (1, 4 - 2, 3)  
10 KHz 100mV

DC RESISTANCE: 0.574 OHMS MAX. (1, 4 - 2, 3)

IR: 1K MEGOHMS MIN. @ 100 VDC (1-4)

PRIMARY LEAKAGE INDUCTANCE: 450nH NOM. (1-2 SH 3, 4)  
120 KHz 50mV

**RoHS COMPLIANT**

DESIGN PER:

**BH CATALOG**

CUSTOM  NON-PROPRIETARY

DRAWN: K. LOFTUS

ENGR: J. DECRAMER

UNLESS OTHERWISE SPECIFIED:  
DIMENSIONS IN INCHES, TOLERANCES  
NON-CUMULATIVE  
.XX $\pm$ .01 .XXX $\pm$ .005

PAGE 1 OF 2



BH ELECTRONICS, INC.  
BURNSVILLE & MARSHALL, MN

© 1998 BH Electronics

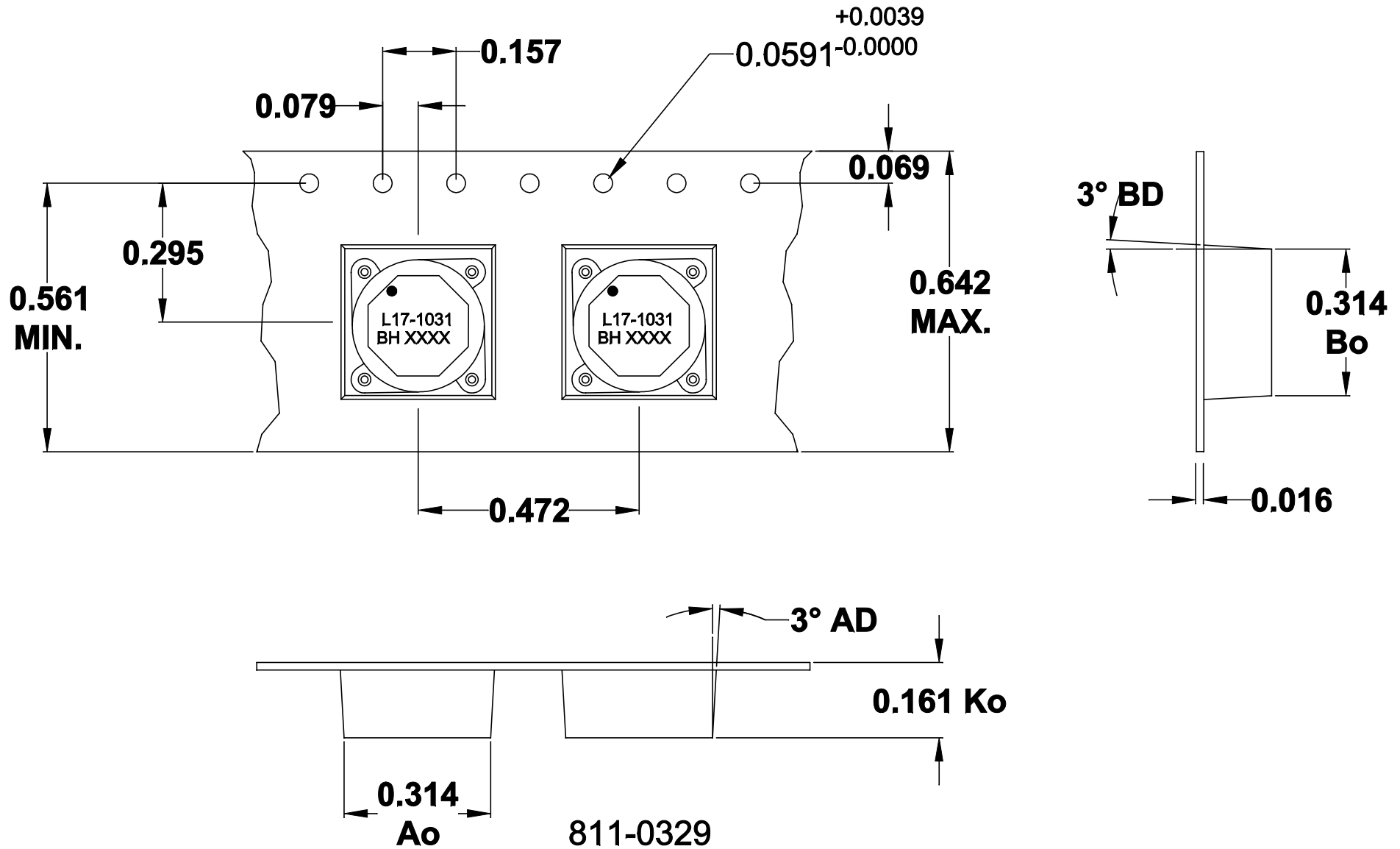
TITLE:


**INDUCTOR**

PART NO.

**L17-1031**

A	12-30-14	CUSTOMER PRINT	JDC
ISSUE	DATE	REVISION	BY



				DESIGN PER:	BH CATALOG	 BH ELECTRONICS, INC. BURNSVILLE & MARSHALL, MN © 1998 BH Electronics
				<input type="checkbox"/> CUSTOM	NON-PROPRIETARY <input checked="" type="checkbox"/>	
				DRAWN:	K. LOFTUS	TITLE: INDUCTOR
				ENGR:	J. DECRAMER	
				UNLESS OTHERWISE SPECIFIED: DIMENSIONS IN INCHES, TOLERANCES NON-CUMULATIVE .XX±.01 .XXX±.005		PART NO. L17-1031
A	12/30/14	CUSTOMER PRINT	JDC	PAGE 2 OF 2		
ISSUE	DATE	REVISION	BY			