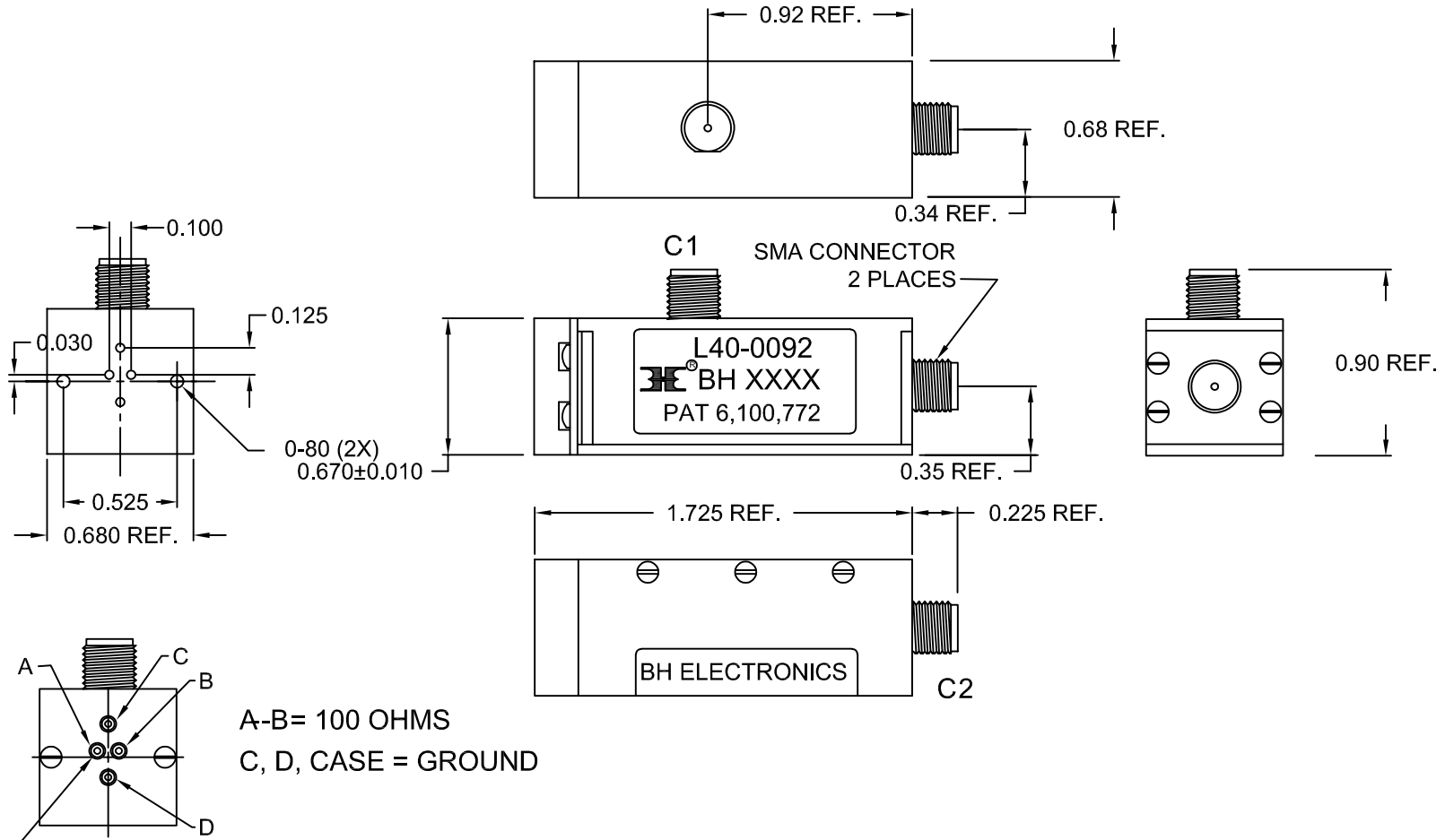


MECHANICAL




A-B= 100 OHMS
C, D, CASE = GROUND

22-26 AWG.
SOCKETS

ROHS COMPLIANT

PROTECTED UNDER PATENT 6,100,772

				DESIGN PER: BH CATALOG	 BHELECTRONICS, INC. BURNSVILLE & MARSHALL, MN © 1998 BH Electronics
				<input checked="" type="checkbox"/> CUSTOM <input type="checkbox"/> NON-PROPRIETARY	
				DRAWN: K. LOFTUS	
				ENGR: N. DOOSE	
				UNLESS OTHERWISE SPECIFIED: DIMENSIONS IN INCHES, TOLERANCES NON-CUMULATIVE .XX±.01 .XXX±.005	TITLE: TEST BALUN
A	1-22-18	CUSTOMER PRINT	<i>msd</i>	PAGE 1 OF 3	PART NO. L40-0092
ISSUE	DATE	REVISION	BY		

ELECTRICAL SPECIFICATIONS

INSERTION LOSS: 1.8dB MAX. 1 MHz - 15 MHz

1.2dB MAX. 15 MHz - 250 MHz

1.4dB MAX. 250 MHz - 350 MHz

1.8dB MAX. 350 MHz - 650 MHz

RETURN LOSS (BIDIRECTIONAL): 12dB MIN. 1 MHz - 15 MHz

20dB MIN. 15 MHz - 550 MHz

17.5dB MIN. 550 MHz - 650 MHz

RETURN LOSS (COMMON MODE): 15dB MIN. 1 MHz - 15 MHz

20dB MIN. 15 MHz - 400 MHz

15dB MIN. 400 MHz - 650 MHz

LONGITUDINAL BALANCE: 60dB MIN. 1 MHz - 350 MHz

50dB MIN. 350 MHz - 650 MHz

COMMON MODE REJECTION: 50dB MIN, 1 MHz - 500 MHz

45dB MIN., 500 MHz - 650 MHz

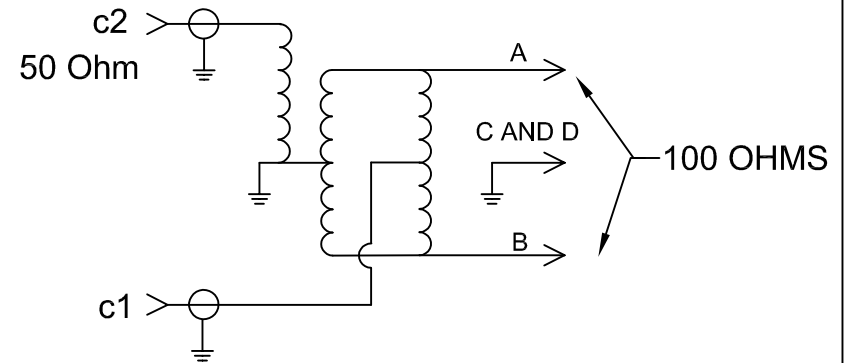
OUTPUT SIGNAL BALANCE: 50dB MIN., 1 MHz - 500 MHz

45dB MIN., 500 MHz - 650 MHz


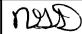
INPUT POWER, ALL PORTS: 0.1 WATT CONTINUOUS

0.4 WATTS MAXIMUM

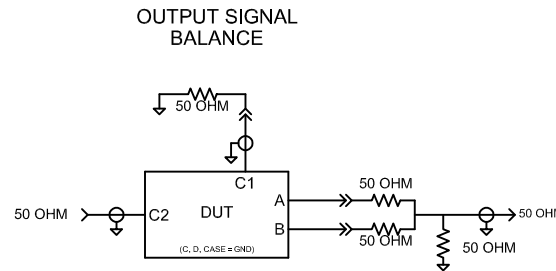
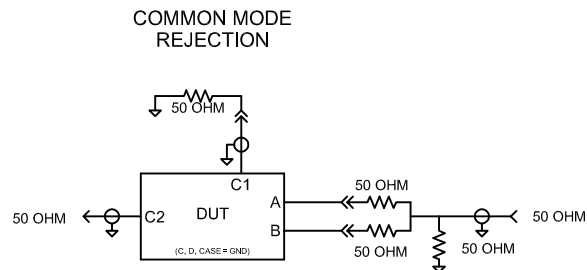
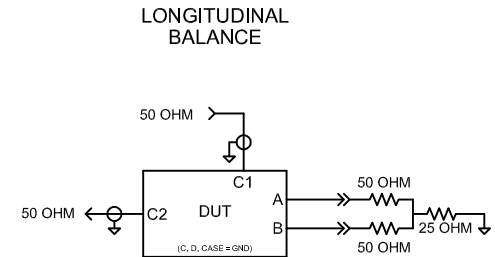
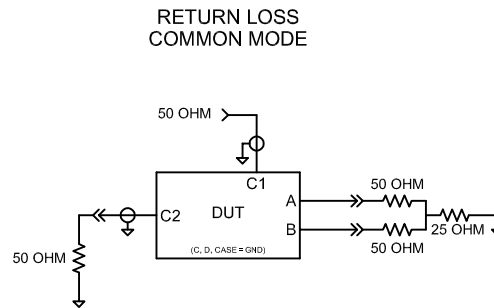
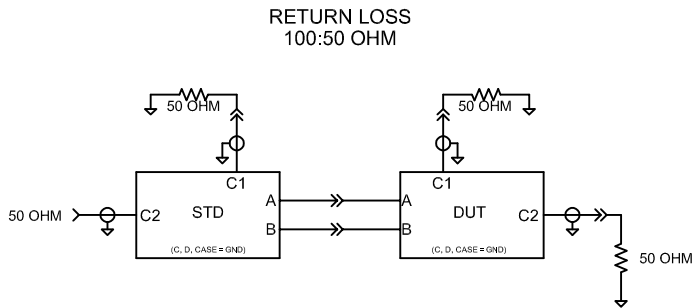
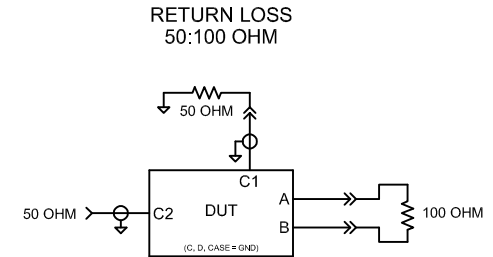
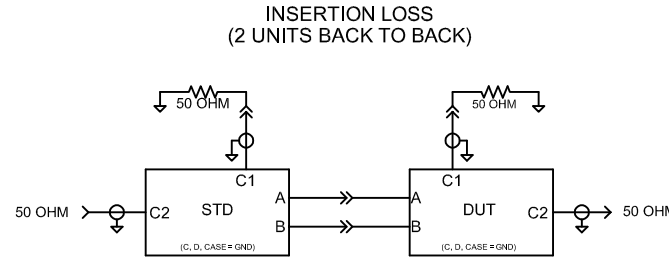
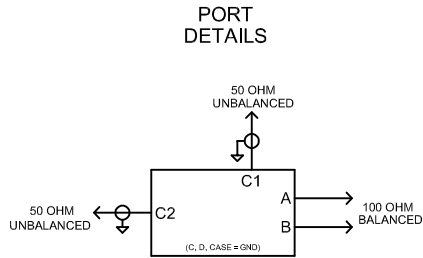
SCHEMATIC



ROHS COMPLIANT

				DESIGN PER: BH CATALOG	 BHELECTRONICS, INC. BURNSVILLE & MARSHALL, MN © 1998 BH Electronics
				<input checked="" type="checkbox"/> CUSTOM <input type="checkbox"/> NON-PROPRIETARY	
				DRAWN: K. LOFTUS	TITLE: TEST BALUN
				ENGR: N. DOOSE	
				UNLESS OTHERWISE SPECIFIED: DIMENSIONS IN INCHES, TOLERANCES NON-CUMULATIVE .XX±.01 .XXX±.005	PART NO. L40-0092
A	1-22-18	CUSTOMER PRINT		PAGE 2 OF 3	
ISSUE	DATE	REVISION	BY		

TEST CONFIGURATIONS



ROHS COMPLIANT

DESIGN PER:
BH CATALOG

CUSTOM NON-PROPRIETARY

DRAWN: K. LOFTUS

ENGR: N. DOOSE

UNLESS OTHERWISE SPECIFIED:
DIMENSIONS IN INCHES, TOLERANCES
NON-CUMULATIVE
.XX±.01 .XXX±.005

PAGE 3 OF 3



BHELECTRONICS, INC.
BURNSVILLE & MARSHALL, MN

© 1998 BH Electronics

TITLE:

TEST BALUN

PART NO.

L40-0092

ISSUE	DATE	REVISION	BY
A	1-22-18	CUSTOMER PRINT	<i>msd</i>